

FBN25B

Order Product Code

(Part is a special shaft diameter specification only)

FBN25B17D10 K4

TYPE No. of Teeth ϕ D^{H7} Keyway
Sprocket No.

- Chain No.25
- Chain Pitch (P) 6.35 mm
- Bushing Link Inner Width (W) 3.18 mm
- Bushing Outside Diameter (Dr) 3.30 mm
- Tooth Width (T) 2.8 mm



☆ Special Shaft Hole Machined Specification

ϕ D ^{H7}	Keyway b×t ²	Set screw M
10	4×1.8	4

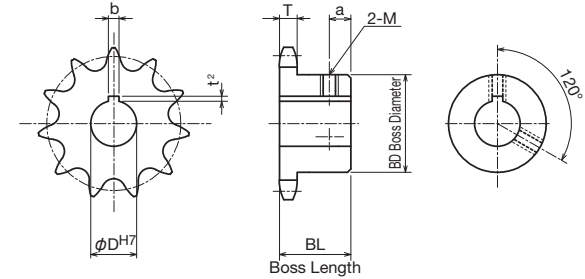
* Parts only can be selected for special shaft hole machining.

TYPE	FBN25B										
	m Carbon Structural Steel										
Product Code	No. of Teeth	ϕ D ^{H7}	Keyway b×t ²	M	Do	Dp	BD	BL	a	Weight g	
FBN25B13D10	13	10	3×1.4	4	30.0	26.534	18	15	6	50	
FBN25B16D10	16	10	3×1.4	4	36.0	32.549	25	15	6	60	
FBN25B16D10K4	16	10	4×1.8	4	36.0	32.549	25	15	6	60	
FBN25B16D12	16	12	4×1.8	5	36.0	32.549	25	15	6	60	
FBN25B17D10	17	10	3×1.4	4	38.0	34.558	25	15	6	70	
FBN25B17D10K4	17	10	4×1.8	4	38.0	34.558	25	15	6	70	
FBN25B17D12	17	12	4×1.8	5	38.0	34.558	25	15	6	70	
FBN25B18D10	18	10	3×1.4	4	40.0	36.568	25	15	6	70	
FBN25B18D10K4	18	10	4×1.8	4	40.0	36.568	25	15	6	70	
FBN25B18D12	18	12	4×1.8	5	40.0	36.568	25	15	6	70	
FBN25B19D10	19	10	3×1.4	4	42.0	38.580	28	15	6	80	
FBN25B19D10K4	19	10	4×1.8	4	42.0	38.580	28	15	6	80	
FBN25B19D12	19	12	4×1.8	5	42.0	38.580	28	15	6	80	
FBN25B19D15	19	15	5×2.3	6	42.0	38.580	28	15	6	80	
FBN25B20D10	20	10	3×1.4	4	44.0	40.592	28	15	6	80	
FBN25B20D10K4	20	10	4×1.8	4	44.0	40.592	28	15	6	80	
FBN25B20D12	20	12	4×1.8	5	44.0	40.592	28	15	6	80	
FBN25B20D15	20	15	5×2.3	6	44.0	40.592	28	15	6	80	
FBN25B21D10	21	10	3×1.4	4	46.0	42.605	28	15	6	90	
FBN25B21D10K4	21	10	4×1.8	4	46.0	42.605	28	15	6	90	
FBN25B21D12	21	12	4×1.8	5	46.0	42.605	28	15	6	90	
FBN25B21D15	21	15	5×2.3	6	46.0	42.605	28	15	6	90	
FBN25B22D12	22	12	4×1.8	5	48.0	44.619	30	15	6	100	
FBN25B22D15	22	15	5×2.3	6	48.0	44.619	30	15	6	100	
FBN25B23D10	23	10	3×1.4	4	50.0	46.634	30	15	6	110	
FBN25B23D12	23	12	4×1.8	5	50.0	46.634	30	15	6	110	
FBN25B23D15	23	15	5×2.3	6	50.0	46.634	30	15	6	110	
FBN25B24D12	24	12	4×1.8	5	52.0	48.649	30	15	6	120	
FBN25B24D15	24	15	5×2.3	6	52.0	48.649	30	15	6	120	
FBN25B25D12	25	12	4×1.8	5	54.0	50.665	35	15	6	140	
FBN25B25D15	25	15	5×2.3	6	54.0	50.665	35	15	6	140	
FBN25B25D16	25	16	5×2.3	6	54.0	50.665	35	15	6	140	
FBN25B26D12	26	12	4×1.8	5	56.0	52.681	35	15	6	140	
FBN25B26D15	26	15	5×2.3	6	56.0	52.681	35	15	6	140	
FBN25B26D16	26	16	5×2.3	6	56.0	52.681	35	15	6	140	
FBN25B27D12	27	12	4×1.8	5	58.0	54.698	35	15	6	150	
FBN25B27D15	27	15	5×2.3	6	58.0	54.698	35	15	6	150	
FBN25B27D16	27	16	5×2.3	6	58.0	54.698	35	15	6	150	

*M is a set screw. * The seal set screws differ from the usual due to the boss type.

FBN Finished Bore Sprocket

D10 K4×1.8 Specification FBN Finished Bore Sprocket New JIS Keyway Specification



TYPE	FBN25B										
	m Carbon Structural Steel										
Product Code	No. of Teeth	ϕ D ^{H7}	Keyway b×t ²	M	Do	Dp	BD	BL	a	Weight g	
FBN25B28D10	28	10	3×1.4	4	60.0	56.714	35	15	6	150	
FBN25B28D12	28	12	4×1.8	5	60.0	56.714	35	15	6	150	
FBN25B28D15	28	15	5×2.3	6	60.0	56.714	35	15	6	150	
FBN25B28D16	28	16	5×2.3	6	60.0	56.714	35	15	6	150	
FBN25B30D12	30	12	4×1.8	5	64.0	60.749	35	15	6	160	
FBN25B30D15	30	15	5×2.3	6	64.0	60.749	35	15	6	160	
FBN25B30D16	30	16	5×2.3	6	64.0	60.749	35	15	6	160	
FBN25B32D15	32	15	5×2.3	6	68.0	64.785	40	20	8	200	
FBN25B32D16	32	16	5×2.3	6	68.0	64.785	40	20	8	200	
FBN25B32D18	32	18	6×2.8	6	68.0	64.785	40	20	8	200	
FBN25B32D20	32	20	6×2.8	6	68.0	64.785	40	20	8	200	
FBN25B34D15	34	15	5×2.3	6	72.0	68.821	40	20	8	210	
FBN25B34D16	34	16	5×2.3	6	72.0	68.821	40	20	8	210	
FBN25B34D18	34	18	6×2.8	6	72.0	68.821	40	20	8	210	
FBN25B34D20	34	20	6×2.8	6	72.0	68.821	40	20	8	210	
FBN25B35D15	35	15	5×2.3	6	74.0	70.839	40	20	8	210	
FBN25B35D16	35	16	5×2.3	6	74.0	70.839	40	20	8	210	
FBN25B35D18	35	18	6×2.8	6	74.0	70.839	40	20	8	210	
FBN25B35D20	35	20	6×2.8	6	74.0	70.839	40	20	8	210	
FBN25B36D15	36	15	5×2.3	6	76.0	72.858	40	20	8	220	
FBN25B36D16	36	16	5×2.3	6	76.0	72.858	40	20	8	220	
FBN25B36D18	36	18	6×2.8	6	76.0	72.858	40	20	8	220	
FBN25B36D20	36	20	6×2.8	6	76.0	72.858	40	20	8	220	
FBN25B38D15	38	15	5×2.3	6	80.0	76.896	40	20	8	260	
FBN25B38D16	38	16	5×2.3	6	80.0	76.896	40	20	8	260	
FBN25B38D18	38	18	6×2.8	6	80.0	76.896	40	20	8	260	
FBN25B38D20	38	20	6×2.8	6	80.0	76.896	40	20	8	260	
FBN25B40D15	40	15	5×2.3	6	84.0	80.934	40	20	8	270	
FBN25B40D16	40	16	5×2.3	6	84.0	80.934	40	20	8	270	
FBN25B40D18	40	18	6×2.8	6	84.0	80.934	40	20	8	270	
FBN25B40D20	40	20	6×2.8	6	84.0	80.934	40	20	8	270	

*M is a set screw. * The seal set screws differ from the usual due to the boss type.



* If you order a special shaft diameter specification, please append K4 after the hole diameter.

Example: FBN25B16D10K4

FBN35B

Order Product Code

(Part is a special shaft diameter specification only)

FBN35B16D10 K4

TYPE No. of Teeth ϕ D^{H7} Keyway

Sprocket No.

- ChainNo.35
- Chain Pitch(P) 9.525 mm
- Bushing Link Inner Width(W) 4.78 mm
- Bushing Outside Diameter(Dr) 5.08 mm
- Tooth Width(T) 4.3 mm



! Sprockets with a ★ symbol for BD have a channel in the boss exterior.

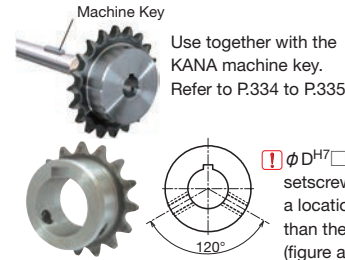
No. of Teeth	S	GD
9		17
10	4.4	20
11		23
12	4.4	26
13	4.4	29

★ Special Shaft Hole Machined Specification

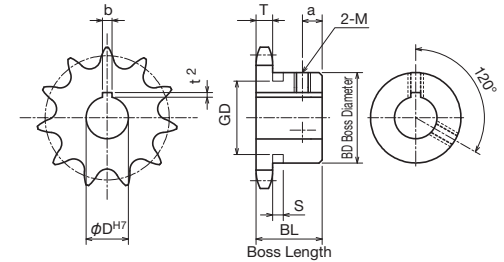
ϕ D ^{H7}	Keyway b×t ²	Set screw M
10	4×1.8	4

* Parts only can be selected for special shaft hole machining.

FBN Finished Bore Sprocket D10 K4×1.8 Specification FBN Finished Bore Sprocket New JIS Keyway Specification



! ϕ D^{H7} mark setscrew is set at a location other than the keyway (figure at left).



m Carbon Structural Steel
h High-frequency Hardened Teeth

TYPE	FBN35B										
Product Code	No. of Teeth	ϕ D ^{H7}	Keyway b×t ²	M	Do	Dp	BD	BL	a	Weight kg	
FBN35B9D10	9	10	3×1.4	4	32.0	27.849	★21.5	20	6	0.06	
FBN35B9D10K4	9	10	4×1.8	4	32.0	27.849	★21.5	20	6	0.06	
FBN35B10D10	10	10	3×1.4	4	34.0	30.824	★24.5	20	6	0.08	
FBN35B10D10K4	10	10	4×1.8	4	34.0	30.824	★24.5	20	6	0.08	
FBN35B10D12	10	12	4×1.8	5	34.0	30.824	★24.5	20	6	0.08	
FBN35B11D10	11	10	3×1.4	4	38.0	33.809	★27	20	6	0.09	
FBN35B11D10K4	11	10	4×1.8	4	38.0	33.809	★27	20	6	0.09	
FBN35B11D12	11	12	4×1.8	5	38.0	33.809	★27	20	6	0.09	
FBN35B11D14	11	14	5×2.3	6	38.0	33.809	★27	20	6	0.09	
FBN35B11D15	11	15	5×2.3	6	38.0	33.809	★27	20	6	0.09	
FBN35B12D10	12	10	3×1.4	4	41.0	36.802	★30.5	20	6	0.12	
FBN35B12D10K4	12	10	4×1.8	4	41.0	36.802	★30.5	20	6	0.12	
FBN35B12D12	12	12	4×1.8	5	41.0	36.802	★30.5	20	6	0.12	
FBN35B12D14	12	14	5×2.3	6	41.0	36.802	★30.5	20	6	0.12	
FBN35B12D15	12	15	5×2.3	6	41.0	36.802	★30.5	20	6	0.12	
FBN35B12D16	12	16	5×2.3	6	41.0	36.802	★30.5	20	6	0.12	
FBN35B12D17	12	17	5×2.3	6	41.0	36.802	★30.5	20	6	0.12	
FBN35B13D10	13	10	3×1.4	4	44.0	39.801	★32	20	6	0.12	
FBN35B13D10K4	13	10	4×1.8	4	44.0	39.801	★32	20	6	0.12	
FBN35B13D12	13	12	4×1.8	5	44.0	39.801	★32	20	6	0.12	
FBN35B13D14	13	14	5×2.3	6	44.0	39.801	★32	20	6	0.12	
FBN35B13D15	13	15	5×2.3	6	44.0	39.801	★32	20	6	0.12	
FBN35B13D16	13	16	5×2.3	6	44.0	39.801	★32	20	6	0.12	
FBN35B13D17	13	17	5×2.3	6	44.0	39.801	★32	20	6	0.12	
FBN35B13D18	13	18	6×2.8	6	44.0	39.801	★32	20	6	0.12	
FBN35B14D10	14	10	3×1.4	4	47.0	42.805	32	20	6	0.12	
FBN35B14D10K4	14	10	4×1.8	4	47.0	42.805	32	20	6	0.12	
FBN35B14D12	14	12	4×1.8	5	47.0	42.805	32	20	6	0.12	
FBN35B14D14	14	14	5×2.3	6	47.0	42.805	32	20	6	0.12	
FBN35B14D15	14	15	5×2.3	6	47.0	42.805	32	20	6	0.12	
FBN35B14D16	14	16	5×2.3	6	47.0	42.805	32	20	6	0.12	
FBN35B14D17	14	17	5×2.3	6	47.0	42.805	32	20	6	0.12	
FBN35B14D18	14	18	6×2.8	6	47.0	42.805	32	20	6	0.12	
FBN35B14D19	14	19	6×2.8	6	47.0	42.805	32	20	6	0.12	
FBN35B14D20	14	20	6×2.8	6	47.0	42.805	32	20	6	0.12	

*M is a set screw. * The seal set screws differ from the usual due to the boss type.

TYPE	FBN35B										
Product Code	No. of Teeth	ϕ D ^{H7}	Keyway b×t ²	M	Do	Dp	BD	BL	a	Weight kg	
FBN35B15D10	15	10	3×1.4	4	51.0	45.813	35	20	6	0.16	
FBN35B15D10K4	15	10	4×1.8	4	51.0	45.813	35	20	6	0.16	
FBN35B15D12	15	12	4×1.8	5	51.0	45.813	35	20	6	0.16	
FBN35B15D14	15	14	5×2.3	6	51.0	45.813	35	20	6	0.16	
FBN35B15D15	15	15	5×2.3	6	51.0	45.813	35	20	6	0.16	
FBN35B15D16	15	16	5×2.3	6	51.0	45.813	35	20	6	0.16	
FBN35B15D17	15	17	5×2.3	6	51.0	45.813	35	20	6	0.16	
FBN35B15D18	15	18	6×2.8	6	51.0	45.813	35	20	6	0.16	
FBN35B15D19	15	19	6×2.8	6	51.0	45.813	35	20	6	0.16	
FBN35B15D20	15	20	6×2.8	6	51.0	45.813	35	20	6	0.16	
FBN35B16D10	16	10	3×1.4	4	54.0	48.824	37	20	6	0.19	
FBN35B16D10K4	16	10	4×1.8	4	54.0	48.824	37	20	6	0.19	
FBN35B16D12	16	12	4×1.8	5	54.0	48.824	37	20	6	0.19	
FBN35B16D14	16	14	5×2.3	6	54.0	48.824	37	20	6	0.19	
FBN35B16D15	16	15	5×2.3	6	54.0	48.824	37	20	6	0.19	
FBN35B16D16	16	16	5×2.3	6	54.0	48.824	37	20	6	0.19	
FBN35B16D17	16	17	5×2.3	6	54.0	48.824	37	20	6	0.19	
FBN35B16D18	16	18	6×2.8	6	54.0	48.824	37	20	6	0.19	
FBN35B16D19	16	19	6×2.8	6	54.0	48.824	37	20	6	0.19	
FBN35B16D20	16	20	6×2.8	6	54.0	48.824	37	20	6	0.19	
FBN35B16D22	16	22	6×2.8	6	54.0	48.824	37	20	6	0.19	
FBN35B16D24	16	24	8×3.3	8	54.0	48.824	37	20	6	0.19	
FBN35B16D25	16	25	8×3.3	8	54.0	48.824	37	20	6	0.19	
FBN35B17D12	17	12	4×1.8	5	57.0	51.837	41	20	6	0.22	
FBN35B17D14	17	14	5×2.3	6	57.0	51.837	41	20	6	0.22	
FBN35B17D15	17	15	5×2.3	6	57.0	51.837	41	20	6	0.22	
FBN35B17D16	17	16	5×2.3	6	57.0	51.837	41	20	6	0.22	
FBN35B17D17	17	17	5×2.3	6	57.0	51.837	41	20	6	0.22	
FBN35B17D18	17	18	6×2.8	6	57.0	51.837	41	20	6	0.22	
FBN35B17D19	17	19	6×2.8	6	57.0	51.837	41	20	6	0.22	
FBN35B17D20	17	20	6×2.8	6	57.0	51.837	41	20	6	0.22	
FBN35B17D22	17	22	6×2.8	6	57.0	51.837	41	20	6	0.22	
FBN35B17D24	17	24	8×3.3	8	57.0	51.837	41	20	6	0.22	
FBN35B17D25	17	25	8×3.3	8	57.0	51.837	41	20	6	0.22	

*M is a set screw. * The seal set screws differ from the usual due to the boss type.

! * If you order a special shaft diameter specification, please append K4 after the hole diameter.

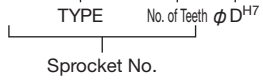
Example: FBN35B16D10K4

Caution

FBN35B

Order Product Code

FBN35B16D10

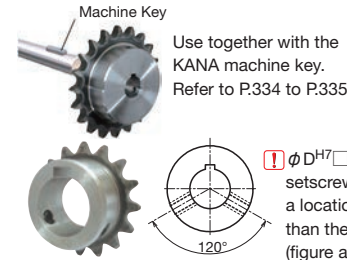


- Chain **No.35**
- Chain Pitch **(P) 9.525 mm**
- Bushing Link Inner Width **(W) 4.78 mm**
- Bushing Outside Diameter **(Dr) 5.08 mm**
- Tooth Width **(T) 4.3 mm**

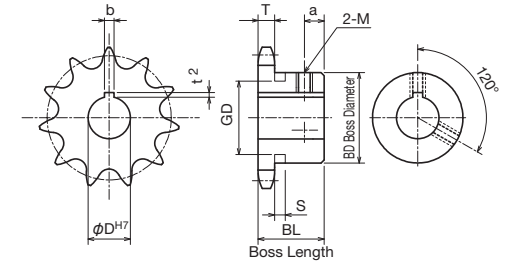
TYPE	FBN35B										
	m Carbon Structural Steel h High-frequency Hardened Teeth										
Product Code	No. of Teeth	φ D ^{H7}	Keyway b×t ²	M	Do	Dp	BD	BL	a	Weight kg	
FBN35B18D12	18	12	4×1.8	5	60.0	54.852	44	20	6	0.25	
FBN35B18D14	18	14	5×2.3	6	60.0	54.852	44	20	6	0.25	
FBN35B18D15	18	15	5×2.3	6	60.0	54.852	44	20	6	0.25	
FBN35B18D16	18	16	5×2.3	6	60.0	54.852	44	20	6	0.25	
FBN35B18D17	18	17	5×2.3	6	60.0	54.852	44	20	6	0.25	
FBN35B18D18	18	18	6×2.8	6	60.0	54.852	44	20	6	0.25	
FBN35B18D19	18	19	6×2.8	6	60.0	54.852	44	20	6	0.25	
FBN35B18D20	18	20	6×2.8	6	60.0	54.852	44	20	6	0.25	
FBN35B18D22	18	22	6×2.8	6	60.0	54.852	44	20	6	0.25	
FBN35B18D24	18	24	8×3.3	8	60.0	54.852	44	20	6	0.25	
FBN35B18D25	18	25	8×3.3	8	60.0	54.852	44	20	6	0.25	
FBN35B19D12	19	12	4×1.8	5	63.0	57.869	47	20	6	0.28	
FBN35B19D14	19	14	5×2.3	6	63.0	57.869	47	20	6	0.28	
FBN35B19D15	19	15	5×2.3	6	63.0	57.869	47	20	6	0.28	
FBN35B19D16	19	16	5×2.3	6	63.0	57.869	47	20	6	0.28	
FBN35B19D17	19	17	5×2.3	6	63.0	57.869	47	20	6	0.28	
FBN35B19D18	19	18	6×2.8	6	63.0	57.869	47	20	6	0.28	
FBN35B19D19	19	19	6×2.8	6	63.0	57.869	47	20	6	0.28	
FBN35B19D20	19	20	6×2.8	6	63.0	57.869	47	20	6	0.28	
FBN35B19D22	19	22	6×2.8	6	63.0	57.869	47	20	6	0.28	
FBN35B19D24	19	24	8×3.3	8	63.0	57.869	47	20	6	0.28	
FBN35B19D25	19	25	8×3.3	8	63.0	57.869	47	20	6	0.28	
FBN35B19D28	19	28	8×3.3	8	63.0	57.869	47	20	6	0.28	
FBN35B20D12	20	12	4×1.8	5	66.0	60.888	50	20	6	0.32	
FBN35B20D14	20	14	5×2.3	6	66.0	60.888	50	20	6	0.32	
FBN35B20D15	20	15	5×2.3	6	66.0	60.888	50	20	6	0.32	
FBN35B20D16	20	16	5×2.3	6	66.0	60.888	50	20	6	0.32	
FBN35B20D17	20	17	5×2.3	6	66.0	60.888	50	20	6	0.32	
FBN35B20D18	20	18	6×2.8	6	66.0	60.888	50	20	6	0.32	
FBN35B20D19	20	19	6×2.8	6	66.0	60.888	50	20	6	0.32	
FBN35B20D20	20	20	6×2.8	6	66.0	60.888	50	20	6	0.32	
FBN35B20D22	20	22	6×2.8	6	66.0	60.888	50	20	6	0.32	
FBN35B20D24	20	24	8×3.3	8	66.0	60.888	50	20	6	0.32	
FBN35B20D25	20	25	8×3.3	8	66.0	60.888	50	20	6	0.32	
FBN35B20D28	20	28	8×3.3	8	66.0	60.888	50	20	6	0.32	
FBN35B20D30	20	30	8×3.3	8	66.0	60.888	50	20	6	0.32	

*M is a set screw. * The seal set screws differ from the usual due to the boss type.

FBN Finished Bore Sprocket D10 K4×1.8 Specification FBN Finished Bore Sprocket New JIS Keyway Specification



φ D^{H7} mark setscrew is set at a location other than the keyway (figure at left).



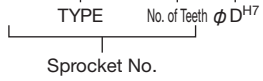
TYPE	FBN35B										
	m Carbon Structural Steel h High-frequency Hardened Teeth										
Product Code	No. of Teeth	φ D ^{H7}	Keyway b×t ²	M	Do	Dp	BD	BL	a	Weight kg	
FBN35B21D12	21	12	4×1.8	5	69.0	63.908	53	20	6	0.36	
FBN35B21D14	21	14	5×2.3	6	69.0	63.908	53	20	6	0.36	
FBN35B21D15	21	15	5×2.3	6	69.0	63.908	53	20	6	0.36	
FBN35B21D16	21	16	5×2.3	6	69.0	63.908	53	20	6	0.36	
FBN35B21D17	21	17	5×2.3	6	69.0	63.908	53	20	6	0.36	
FBN35B21D18	21	18	6×2.8	6	69.0	63.908	53	20	6	0.36	
FBN35B21D19	21	19	6×2.8	6	69.0	63.908	53	20	6	0.36	
FBN35B21D20	21	20	6×2.8	6	69.0	63.908	53	20	6	0.36	
FBN35B21D22	21	22	6×2.8	6	69.0	63.908	53	20	6	0.36	
FBN35B21D24	21	24	8×3.3	8	69.0	63.908	53	20	6	0.36	
FBN35B21D25	21	25	8×3.3	8	69.0	63.908	53	20	6	0.36	
FBN35B21D28	21	28	8×3.3	8	69.0	63.908	53	20	6	0.36	
FBN35B21D30	21	30	8×3.3	8	69.0	63.908	53	20	6	0.36	
FBN35B21D32	21	32	10×3.3	8	69.0	63.908	53	20	6	0.36	
FBN35B22D12	22	12	4×1.8	5	72.0	66.929	56	20	6	0.37	
FBN35B22D14	22	14	5×2.3	6	72.0	66.929	56	20	6	0.37	
FBN35B22D15	22	15	5×2.3	6	72.0	66.929	56	20	6	0.37	
FBN35B22D16	22	16	5×2.3	6	72.0	66.929	56	20	6	0.37	
FBN35B22D17	22	17	5×2.3	6	72.0	66.929	56	20	6	0.37	
FBN35B22D18	22	18	6×2.8	6	72.0	66.929	56	20	6	0.37	
FBN35B22D19	22	19	6×2.8	6	72.0	66.929	56	20	6	0.37	
FBN35B22D20	22	20	6×2.8	6	72.0	66.929	56	20	6	0.37	
FBN35B22D22	22	22	6×2.8	6	72.0	66.929	56	20	6	0.37	
FBN35B22D24	22	24	8×3.3	8	72.0	66.929	56	20	6	0.37	
FBN35B22D25	22	25	8×3.3	8	72.0	66.929	56	20	6	0.37	
FBN35B22D28	22	28	8×3.3	8	72.0	66.929	56	20	6	0.37	
FBN35B22D30	22	30	8×3.3	8	72.0	66.929	56	20	6	0.37	
FBN35B22D32	22	32	10×3.3	8	72.0	66.929	56	20	6	0.37	
FBN35B23D12	23	12	4×1.8	5	75.0	69.951	60	20	6	0.38	
FBN35B23D14	23	14	5×2.3	6	75.0	69.951	60	20	6	0.38	
FBN35B23D15	23	15	5×2.3	6	75.0	69.951	60	20	6	0.38	
FBN35B23D16	23	16	5×2.3	6	75.0	69.951	60	20	6	0.38	
FBN35B23D17	23	17	5×2.3	6	75.0	69.951	60	20	6	0.38	
FBN35B23D18	23	18	6×2.8	6	75.0	69.951	60	20	6	0.38	
FBN35B23D19	23	19	6×2.8	6	75.0	69.951	60	20	6	0.38	
FBN35B23D20	23	20	6×2.8	6	75.0	69.951	60	20	6	0.38	
FBN35B23D22	23	22	6×2.8	6	75.0	69.951	60	20	6	0.38	

*M is a set screw. * The seal set screws differ from the usual due to the boss type.

FBN35B

Order Product Code

FBN35B16D10



Sprocket No.

- Chain **No.35**
- Chain Pitch **(P) 9.525 mm**
- Bushing Link Inner Width **(W) 4.78 mm**
- Bushing Outside Diameter **(Dr) 5.08 mm**
- Tooth Width **(T) 4.3 mm**

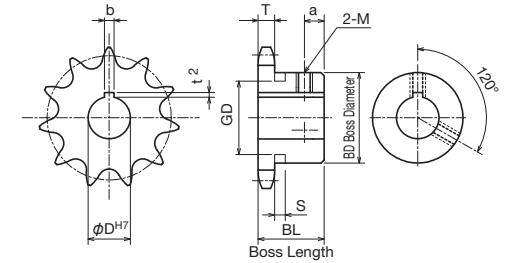
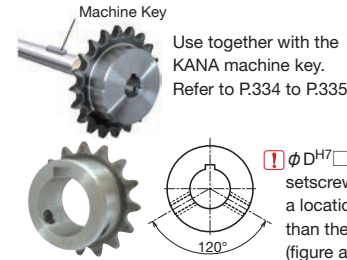


m Carbon Structural Steel
h High-frequency Hardened Teeth

TYPE	FBN35B										
Product Code	No. of Teeth	φ D ^{H7}	Keyway b×t ²	M	Do	Dp	BD	BL	a	Weight kg	
FBN35B23D24	23	24	8×3.3	8	75.0	69.951	60	20	6	0.38	
FBN35B23D25	23	25	8×3.3	8	75.0	69.951	60	20	6	0.38	
FBN35B23D28	23	28	8×3.3	8	75.0	69.951	60	20	6	0.38	
FBN35B23D30	23	30	8×3.3	8	75.0	69.951	60	20	6	0.38	
FBN35B23D32	23	32	10×3.3	8	75.0	69.951	60	20	6	0.38	
FBN35B24D12	24	12	4×1.8	5	78.0	72.974	53	22	8	0.43	
FBN35B24D14	24	14	5×2.3	6	78.0	72.974	53	22	8	0.43	
FBN35B24D15	24	15	5×2.3	6	78.0	72.974	53	22	8	0.43	
FBN35B24D16	24	16	5×2.3	6	78.0	72.974	53	22	8	0.43	
FBN35B24D17	24	17	5×2.3	6	78.0	72.974	53	22	8	0.43	
FBN35B24D18	24	18	6×2.8	6	78.0	72.974	53	22	8	0.43	
FBN35B24D19	24	19	6×2.8	6	78.0	72.974	53	22	8	0.43	
FBN35B24D20	24	20	6×2.8	6	78.0	72.974	53	22	8	0.43	
FBN35B24D22	24	22	6×2.8	6	78.0	72.974	53	22	8	0.43	
FBN35B24D24	24	24	8×3.3	8	78.0	72.974	53	22	8	0.43	
FBN35B24D25	24	25	8×3.3	8	78.0	72.974	53	22	8	0.43	
FBN35B24D28	24	28	8×3.3	8	78.0	72.974	53	22	8	0.43	
FBN35B24D30	24	30	8×3.3	8	78.0	72.974	53	22	8	0.43	
FBN35B24D32	24	32	10×3.3	8	78.0	72.974	53	22	8	0.43	
FBN35B25D15	25	15	5×2.3	6	81.0	75.997	53	22	8	0.44	
FBN35B25D16	25	16	5×2.3	6	81.0	75.997	53	22	8	0.44	
FBN35B25D17	25	17	5×2.3	6	81.0	75.997	53	22	8	0.44	
FBN35B25D18	25	18	6×2.8	6	81.0	75.997	53	22	8	0.44	
FBN35B25D19	25	19	6×2.8	6	81.0	75.997	53	22	8	0.44	
FBN35B25D20	25	20	6×2.8	6	81.0	75.997	53	22	8	0.44	
FBN35B25D22	25	22	6×2.8	6	81.0	75.997	53	22	8	0.44	
FBN35B25D24	25	24	8×3.3	8	81.0	75.997	53	22	8	0.44	
FBN35B25D25	25	25	8×3.3	8	81.0	75.997	53	22	8	0.44	
FBN35B25D28	25	28	8×3.3	8	81.0	75.997	53	22	8	0.44	
FBN35B25D30	25	30	8×3.3	8	81.0	75.997	53	22	8	0.44	
FBN35B25D32	25	32	10×3.3	8	81.0	75.997	53	22	8	0.44	
FBN35B26D15	26	15	5×2.3	6	84.0	79.022	53	22	8	0.45	
FBN35B26D16	26	16	5×2.3	6	84.0	79.022	53	22	8	0.45	
FBN35B26D17	26	17	5×2.3	6	84.0	79.022	53	22	8	0.45	
FBN35B26D18	26	18	6×2.8	6	84.0	79.022	53	22	8	0.45	
FBN35B26D19	26	19	6×2.8	6	84.0	79.022	53	22	8	0.45	

*M is a set screw. * The seal set screws differ from the usual due to the boss type.

FBN Finished Bore Sprocket D10 K4×1.8 Specification FBN Finished Bore Sprocket New JIS Keyway Specification



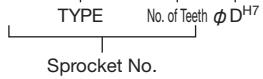
TYPE	FBN35B										
Product Code	No. of Teeth	φ D ^{H7}	Keyway b×t ²	M	Do	Dp	BD	BL	a	Weight kg	
FBN35B26D20	26	20	6×2.8	6	84.0	79.022	53	22	8	0.45	
FBN35B26D22	26	22	6×2.8	6	84.0	79.022	53	22	8	0.45	
FBN35B26D24	26	24	8×3.3	8	84.0	79.022	53	22	8	0.45	
FBN35B26D25	26	25	8×3.3	8	84.0	79.022	53	22	8	0.45	
FBN35B26D28	26	28	8×3.3	8	84.0	79.022	53	22	8	0.45	
FBN35B26D30	26	30	8×3.3	8	84.0	79.022	53	22	8	0.45	
FBN35B26D32	26	32	10×3.3	8	84.0	79.022	53	22	8	0.45	
FBN35B27D15	27	15	5×2.3	6	87.0	82.046	53	22	8	0.46	
FBN35B27D16	27	16	5×2.3	6	87.0	82.046	53	22	8	0.46	
FBN35B27D17	27	17	5×2.3	6	87.0	82.046	53	22	8	0.46	
FBN35B27D18	27	18	6×2.8	6	87.0	82.046	53	22	8	0.46	
FBN35B27D19	27	19	6×2.8	6	87.0	82.046	53	22	8	0.46	
FBN35B27D20	27	20	6×2.8	6	87.0	82.046	53	22	8	0.46	
FBN35B27D22	27	22	6×2.8	6	87.0	82.046	53	22	8	0.46	
FBN35B27D24	27	24	8×3.3	8	87.0	82.046	53	22	8	0.46	
FBN35B27D25	27	25	8×3.3	8	87.0	82.046	53	22	8	0.46	
FBN35B27D28	27	28	8×3.3	8	87.0	82.046	53	22	8	0.46	
FBN35B27D30	27	30	8×3.3	8	87.0	82.046	53	22	8	0.46	
FBN35B27D32	27	32	10×3.3	8	87.0	82.046	53	22	8	0.46	
FBN35B28D15	28	15	5×2.3	6	90.0	85.072	53	22	8	0.48	
FBN35B28D16	28	16	5×2.3	6	90.0	85.072	53	22	8	0.48	
FBN35B28D17	28	17	5×2.3	6	90.0	85.072	53	22	8	0.48	
FBN35B28D18	28	18	6×2.8	6	90.0	85.072	53	22	8	0.48	
FBN35B28D19	28	19	6×2.8	6	90.0	85.072	53	22	8	0.48	
FBN35B28D20	28	20	6×2.8	6	90.0	85.072	53	22	8	0.48	
FBN35B28D22	28	22	6×2.8	6	90.0	85.072	53	22	8	0.48	
FBN35B28D24	28	24	8×3.3	8	90.0	85.072	53	22	8	0.48	
FBN35B28D25	28	25	8×3.3	8	90.0	85.072	53	22	8	0.48	
FBN35B28D28	28	28	8×3.3	8	90.0	85.072	53	22	8	0.48	
FBN35B28D30	28	30	8×3.3	8	90.0	85.072	53	22	8	0.48	
FBN35B28D32	28	32	10×3.3	8	90.0	85.072	53	22	8	0.48	
FBN35B30D15	30	15	5×2.3	6	96.0	91.124	53	22	8	0.51	
FBN35B30D16	30	16	5×2.3	6	96.0	91.124	53	22	8	0.51	
FBN35B30D17	30	17	5×2.3	6	96.0	91.124	53	22	8	0.51	
FBN35B30D18	30	18	6×2.8	6	96.0	91.124	53	22	8	0.51	
FBN35B30D19	30	19	6×2.8	6	96.0	91.124	53	22	8	0.51	

*M is a set screw. * The seal set screws differ from the usual due to the boss type.

FBN35B

Order Product Code

FBN35B16D10



- Chain **No.35**
- Chain Pitch **(P) 9.525 mm**
- Bushing Link Inner Width **(W) 4.78 mm**
- Bushing Outside Diameter **(Dr) 5.08 mm**
- Tooth Width **(T) 4.3 mm**

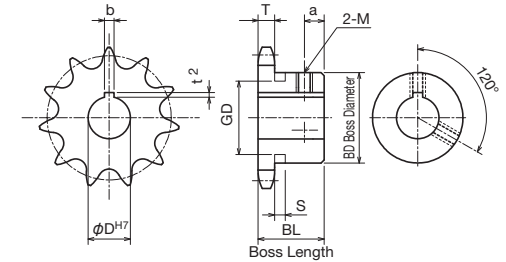
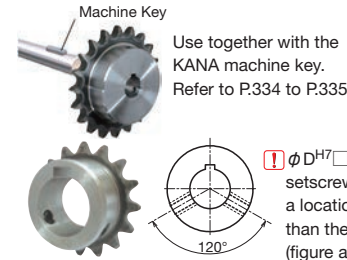


m Carbon Structural Steel
h High-frequency Hardened Teeth

TYPE	FBN35B										
Product Code	No. of Teeth	φ D ^{H7}	Keyway b×t ²	M	Do	Dp	BD	BL	a	Weight kg	
FBN35B30D20	30	20	6×2.8	6	96.0	91.124	53	22	8	0.51	
FBN35B30D22	30	22	6×2.8	6	96.0	91.124	53	22	8	0.51	
FBN35B30D24	30	24	8×3.3	8	96.0	91.124	53	22	8	0.51	
FBN35B30D25	30	25	8×3.3	8	96.0	91.124	53	22	8	0.51	
FBN35B30D28	30	28	8×3.3	8	96.0	91.124	53	22	8	0.51	
FBN35B30D30	30	30	8×3.3	8	96.0	91.124	53	22	8	0.51	
FBN35B30D32	30	32	10×3.3	8	96.0	91.124	53	22	8	0.51	
FBN35B32D15	32	15	5×2.3	6	102.0	97.177	53	22	8	0.54	
FBN35B32D16	32	16	5×2.3	6	102.0	97.177	53	22	8	0.54	
FBN35B32D17	32	17	5×2.3	6	102.0	97.177	53	22	8	0.54	
FBN35B32D18	32	18	6×2.8	6	102.0	97.177	53	22	8	0.54	
FBN35B32D19	32	19	6×2.8	6	102.0	97.177	53	22	8	0.54	
FBN35B32D20	32	20	6×2.8	6	102.0	97.177	53	22	8	0.54	
FBN35B32D22	32	22	6×2.8	6	102.0	97.177	53	22	8	0.54	
FBN35B32D24	32	24	8×3.3	8	102.0	97.177	53	22	8	0.54	
FBN35B32D25	32	25	8×3.3	8	102.0	97.177	53	22	8	0.54	
FBN35B32D28	32	28	8×3.3	8	102.0	97.177	53	22	8	0.54	
FBN35B32D30	32	30	8×3.3	8	102.0	97.177	53	22	8	0.54	
FBN35B32D32	32	32	10×3.3	8	102.0	97.177	53	22	8	0.54	
FBN35B34D15	34	15	5×2.3	6	109.0	103.231	53	22	8	0.57	
FBN35B34D16	34	16	5×2.3	6	109.0	103.231	53	22	8	0.57	
FBN35B34D17	34	17	5×2.3	6	109.0	103.231	53	22	8	0.57	
FBN35B34D18	34	18	6×2.8	6	109.0	103.231	53	22	8	0.57	
FBN35B34D19	34	19	6×2.8	6	109.0	103.231	53	22	8	0.57	
FBN35B34D20	34	20	6×2.8	6	109.0	103.231	53	22	8	0.57	
FBN35B34D22	34	22	6×2.8	6	109.0	103.231	53	22	8	0.57	
FBN35B34D24	34	24	8×3.3	8	109.0	103.231	53	22	8	0.57	
FBN35B34D25	34	25	8×3.3	8	109.0	103.231	53	22	8	0.57	
FBN35B34D28	34	28	8×3.3	8	109.0	103.231	53	22	8	0.57	
FBN35B34D30	34	30	8×3.3	8	109.0	103.231	53	22	8	0.57	
FBN35B34D32	34	32	10×3.3	8	109.0	103.231	53	22	8	0.57	
FBN35B35D15	35	15	5×2.3	6	112.0	106.259	53	22	8	0.59	
FBN35B35D16	35	16	5×2.3	6	112.0	106.259	53	22	8	0.59	
FBN35B35D17	35	17	5×2.3	6	112.0	106.259	53	22	8	0.59	
FBN35B35D18	35	18	6×2.8	6	112.0	106.259	53	22	8	0.59	
FBN35B35D19	35	19	6×2.8	6	112.0	106.259	53	22	8	0.59	

*M is a set screw. * The seal set screws differ from the usual due to the boss type.

FBN Finished Bore Sprocket D10 K4×1.8 Specification FBN Finished Bore Sprocket New JIS Keyway Specification



TYPE	FBN35B										
Product Code	No. of Teeth	φ D ^{H7}	Keyway b×t ²	M	Do	Dp	BD	BL	a	Weight kg	
FBN35B35D20	35	20	6×2.8	6	112.0	106.259	53	22	8	0.59	
FBN35B35D22	35	22	6×2.8	6	112.0	106.259	53	22	8	0.59	
FBN35B35D24	35	24	8×3.3	8	112.0	106.259	53	22	8	0.59	
FBN35B35D25	35	25	8×3.3	8	112.0	106.259	53	22	8	0.59	
FBN35B35D28	35	28	8×3.3	8	112.0	106.259	53	22	8	0.59	
FBN35B35D30	35	30	8×3.3	8	112.0	106.259	53	22	8	0.59	
FBN35B35D32	35	32	10×3.3	8	112.0	106.259	53	22	8	0.59	
FBN35B36D15	36	15	5×2.3	6	115.0	109.287	53	22	8	0.61	
FBN35B36D16	36	16	5×2.3	6	115.0	109.287	53	22	8	0.61	
FBN35B36D17	36	17	5×2.3	6	115.0	109.287	53	22	8	0.61	
FBN35B36D18	36	18	6×2.8	6	115.0	109.287	53	22	8	0.61	
FBN35B36D19	36	19	6×2.8	6	115.0	109.287	53	22	8	0.61	
FBN35B36D20	36	20	6×2.8	6	115.0	109.287	53	22	8	0.61	
FBN35B36D22	36	22	6×2.8	6	115.0	109.287	53	22	8	0.61	
FBN35B36D24	36	24	8×3.3	8	115.0	109.287	53	22	8	0.61	
FBN35B36D25	36	25	8×3.3	8	115.0	109.287	53	22	8	0.61	
FBN35B36D28	36	28	8×3.3	8	115.0	109.287	53	22	8	0.61	
FBN35B36D30	36	30	8×3.3	8	115.0	109.287	53	22	8	0.61	
FBN35B36D32	36	32	10×3.3	8	115.0	109.287	53	22	8	0.61	
FBN35B38D20	38	20	6×2.8	6	121.0	115.344	63	25	10	0.82	
FBN35B38D22	38	22	6×2.8	6	121.0	115.344	63	25	10	0.82	
FBN35B38D24	38	24	8×3.3	8	121.0	115.344	63	25	10	0.82	
FBN35B38D25	38	25	8×3.3	8	121.0	115.344	63	25	10	0.82	
FBN35B38D28	38	28	8×3.3	8	121.0	115.344	63	25	10	0.82	
FBN35B38D30	38	30	8×3.3	8	121.0	115.344	63	25	10	0.82	
FBN35B38D32	38	32	10×3.3	8	121.0	115.344	63	25	10	0.82	
FBN35B38D35	38	35	10×3.3	8	121.0	115.344	63	25	10	0.82	
FBN35B38D38	38	38	10×3.3	8	121.0	115.344	63	25	10	0.82	
FBN35B40D20	40	20	6×2.8	6	127.0	121.401	63	25	10	0.85	
FBN35B40D22	40	22	6×2.8	6	127.0	121.401	63	25	10	0.85	
FBN35B40D24	40	24	8×3.3	8	127.0	121.401	63	25	10	0.85	
FBN35B40D25	40	25	8×3.3	8	127.0	121.401	63	25	10	0.85	
FBN35B40D28	40	28	8×3.3	8	127.0	121.401	63	25	10	0.85	
FBN35B40D30	40	30	8×3.3	8	127.0	121.401	63	25	10	0.85	
FBN35B40D32	40	32	10×3.3	8	127.0	121.401	63	25	10	0.85	
FBN35B40D35	40	35	10×3.3	8	127.0	121.401	63	25	10	0.85	
FBN35B40D38	40	38	10×3.3	8	127.0	121.401	63	25	10	0.85	

*M is a set screw. * The seal set screws differ from the usual due to the boss type.

FBN40B

Order Product Code

(Part is a special shaft diameter specification only)

FBN40B12D10 K4

TYPE No. of Teeth ϕ D^{H7} Keyway
Sprocket No.



! Sprockets with a ★ symbol for BD have a channel in the boss exterior.

No. of Teeth	S	GD
9	5.2	23
10		27
11	5.2	31
12		35

☆ Special Shaft Hole Machined Specification

ϕ D ^{H7}	Keyway b×t ²	Set screw M
10	4×1.8	4

* Parts only can be selected for special shaft hole machining.

- ChainNo.40
- Chain Pitch(P) 12.70mm
- Roller Link Inner Width(W) 7.95mm
- Roller Outside Diameter(Dr) 7.92mm
- Tooth Width(T) 7.2 mm

m Carbon Structural Steel
h High-frequency Hardened Teeth

TYPE	FBN40B										
Product Code	No. of Teeth	ϕ D ^{H7}	Keyway b×t ²	M	Do	Dp	BD	BL	a	Weight kg	
FBN40B9D10	9	10	3×1.4	4	42.0	37.132	★28	22	5	0.11	
FBN40B9D10K4	9	10	4×1.8	4	42.0	37.132	★28	22	5	0.11	
FBN40B9D12	9	12	4×1.8	5	42.0	37.132	★28	22	5	0.11	
FBN40B9D14	9	14	5×2.3	6	42.0	37.132	★28	22	5	0.11	
FBN40B9D15	9	15	5×2.3	6	42.0	37.132	★28	22	5	0.11	
FBN40B10D10	10	10	3×1.4	4	46.0	41.098	★32	22	5	0.14	
FBN40B10D10K4	10	10	4×1.8	4	46.0	41.098	★32	22	5	0.14	
FBN40B10D12	10	12	4×1.8	5	46.0	41.098	★32	22	5	0.14	
FBN40B10D14	10	14	5×2.3	6	46.0	41.098	★32	22	5	0.14	
FBN40B10D15	10	15	5×2.3	6	46.0	41.098	★32	22	5	0.14	
FBN40B10D16	10	16	5×2.3	6	46.0	41.098	★32	22	5	0.14	
FBN40B10D17	10	17	5×2.3	6	46.0	41.098	★32	22	5	0.14	
FBN40B10D18	10	18	6×2.8	6	46.0	41.098	★32	22	5	0.14	
FBN40B11D10	11	10	3×1.4	4	51.0	45.078	★36	22	5	0.19	
FBN40B11D10K4	11	10	4×1.8	4	51.0	45.078	★36	22	5	0.19	
FBN40B11D12	11	12	4×1.8	5	51.0	45.078	★36	22	5	0.19	
FBN40B11D14	11	14	5×2.3	6	51.0	45.078	★36	22	5	0.19	
FBN40B11D15	11	15	5×2.3	6	51.0	45.078	★36	22	5	0.19	
FBN40B11D16	11	16	5×2.3	6	51.0	45.078	★36	22	5	0.19	
FBN40B11D17	11	17	5×2.3	6	51.0	45.078	★36	22	5	0.19	
FBN40B11D18	11	18	6×2.8	6	51.0	45.078	★36	22	5	0.19	
FBN40B11D19	11	19	6×2.8	6	51.0	45.078	★36	22	5	0.19	
FBN40B11D20	11	20	6×2.8	6	51.0	45.078	★36	22	5	0.19	
FBN40B12D10	12	10	3×1.4	4	55.0	49.069	★40	22	5	0.22	
FBN40B12D10K4	12	10	4×1.8	4	55.0	49.069	★40	22	5	0.22	
FBN40B12D12	12	12	4×1.8	5	55.0	49.069	★40	22	5	0.22	
FBN40B12D14	12	14	5×2.3	6	55.0	49.069	★40	22	5	0.22	
FBN40B12D15	12	15	5×2.3	6	55.0	49.069	★40	22	5	0.22	
FBN40B12D16	12	16	5×2.3	6	55.0	49.069	★40	22	5	0.22	
FBN40B12D17	12	17	5×2.3	6	55.0	49.069	★40	22	5	0.22	
FBN40B12D18	12	18	6×2.8	6	55.0	49.069	★40	22	5	0.22	
FBN40B12D19	12	19	6×2.8	6	55.0	49.069	★40	22	5	0.22	
FBN40B12D20	12	20	6×2.8	6	55.0	49.069	★40	22	5	0.22	
FBN40B12D22	12	22	6×2.8	6	55.0	49.069	★40	22	5	0.22	
FBN40B13D12	13	12	4×1.8	5	59.0	53.068	37	22	6	0.23	
FBN40B13D14	13	14	5×2.3	6	59.0	53.068	37	22	6	0.23	
FBN40B13D15	13	15	5×2.3	6	59.0	53.068	37	22	6	0.23	

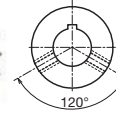
*M is a set screw. * The seal set screws differ from the usual due to the boss type.

FBN Finished Bore Sprocket D10 K4×1.8 Specification FBN Finished Bore Sprocket New JIS Keyway Specification

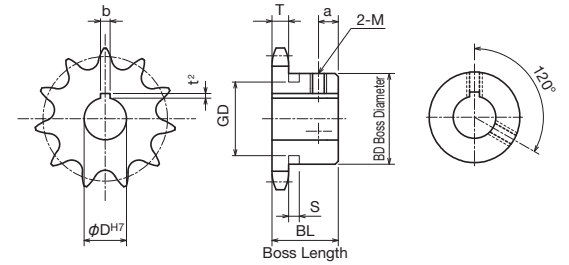
Machine Key



Use together with the KANA machine key. Refer to P.334 to P.335



! ϕ D^{H7} mark setscrew is set at a location other than the keyway (figure at left).



TYPE	FBN40B										
Product Code	No. of Teeth	ϕ D ^{H7}	Keyway b×t ²	M	Do	Dp	BD	BL	a	Weight kg	
FBN40B13D16	13	16	5×2.3	6	59.0	53.068	37	22	6	0.23	
FBN40B13D17	13	17	5×2.3	6	59.0	53.068	37	22	6	0.23	
FBN40B13D18	13	18	6×2.8	6	59.0	53.068	37	22	6	0.23	
FBN40B13D19	13	19	6×2.8	6	59.0	53.068	37	22	6	0.23	
FBN40B13D20	13	20	6×2.8	6	59.0	53.068	37	22	6	0.23	
FBN40B13D22	13	22	6×2.8	6	59.0	53.068	37	22	6	0.23	
FBN40B13D24	13	24	8×3.3	8	59.0	53.068	37	22	6	0.23	
FBN40B13D25	13	25	8×3.3	8	59.0	53.068	37	22	6	0.23	
FBN40B14D12	14	12	4×1.8	5	63.0	57.073	42	22	6	0.28	
FBN40B14D14	14	14	5×2.3	6	63.0	57.073	42	22	6	0.28	
FBN40B14D15	14	15	5×2.3	6	63.0	57.073	42	22	6	0.28	
FBN40B14D16	14	16	5×2.3	6	63.0	57.073	42	22	6	0.28	
FBN40B14D17	14	17	5×2.3	6	63.0	57.073	42	22	6	0.28	
FBN40B14D18	14	18	6×2.8	6	63.0	57.073	42	22	6	0.28	
FBN40B14D19	14	19	6×2.8	6	63.0	57.073	42	22	6	0.28	
FBN40B14D20	14	20	6×2.8	6	63.0	57.073	42	22	6	0.28	
FBN40B14D22	14	22	6×2.8	6	63.0	57.073	42	22	6	0.28	
FBN40B14D24	14	24	8×3.3	8	63.0	57.073	42	22	6	0.28	
FBN40B14D25	14	25	8×3.3	*6	63.0	57.073	42	22	6	0.28	
FBN40B14D28	14	28	8×3.3	8	63.0	57.073	42	22	6	0.28	
FBN40B15D12	15	12	4×1.8	5	67.0	61.084	46	22	6	0.34	
FBN40B15D14	15	14	5×2.3	6	67.0	61.084	46	22	6	0.34	
FBN40B15D15	15	15	5×2.3	6	67.0	61.084	46	22	6	0.34	
FBN40B15D16	15	16	5×2.3	6	67.0	61.084	46	22	6	0.34	
FBN40B15D17	15	17	5×2.3	6	67.0	61.084	46	22	6	0.34	
FBN40B15D18	15	18	6×2.8	6	67.0	61.084	46	22	6	0.34	
FBN40B15D19	15	19	6×2.8	6	67.0	61.084	46	22	6	0.34	
FBN40B15D20	15	20	6×2.8	6	67.0	61.084	46	22	6	0.34	
FBN40B15D22	15	22	6×2.8	6	67.0	61.084	46	22	6	0.34	
FBN40B15D24	15	24	8×3.3	8	67.0	61.084	46	22	6	0.34	
FBN40B15D25	15	25	8×3.3	8	67.0	61.084	46	22	6	0.34	
FBN40B15D28	15	28	8×3.3	8	67.0	61.084	46	22	6	0.34	
FBN40B15D30	15	30	8×3.3	*6	67.0	61.084	46	22	6	0.34	
FBN40B16D14	16	14	5×2.3	6	71.0	65.098	50	22	6	0.40	
FBN40B16D15	16	15	5×2.3	6	71.0	65.098	50	22	6	0.40	
FBN40B16D16	16	16	5×2.3	6	71.0	65.098	50	22	6	0.40	
FBN40B16D17	16	17	5×2.3	6	71.0	65.098	50	22	6	0.40	
FBN40B16D18	16	18	6×2.8	6	71.0	65.098	50	22	6	0.40	

*M is a set screw. * The seal set screws differ from the usual due to the boss type.



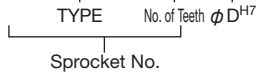
* If you order a special shaft diameter specification, please append K4 after the hole diameter.

Example: FBN40B12D10K4

FBN40B

Order Product Code

FBN40B12D10

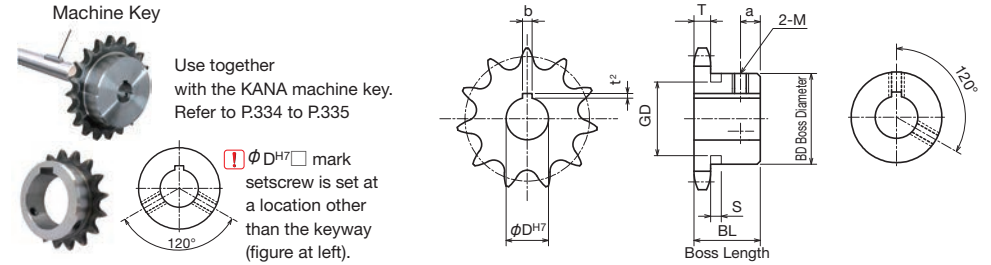


- ChainNo.40
- Chain Pitch(P) 12.70mm
- Roller Link Inner Width(W) 7.95mm
- Roller Outside Diameter(Dr) 7.92mm
- Tooth Width(T) 7.2 mm

TYPE	FBN40B										
	m Carbon Structural Steel h High-frequency Hardened Teeth										
Product Code	No. of Teeth	φ D ^{H7}	Keyway b×t ²	M	Do	Dp	BD	BL	a	Weight kg	
FBN40B16D19	16	19	6×2.8	6	71.0	65.098	50	22	6	0.40	
FBN40B16D20	16	20	6×2.8	6	71.0	65.098	50	22	6	0.40	
FBN40B16D22	16	22	6×2.8	6	71.0	65.098	50	22	6	0.40	
FBN40B16D24	16	24	8×3.3	8	71.0	65.098	50	22	6	0.40	
FBN40B16D25	16	25	8×3.3	8	71.0	65.098	50	22	6	0.40	
FBN40B16D28	16	28	8×3.3	8	71.0	65.098	50	22	6	0.40	
FBN40B16D30	16	30	8×3.3	8	71.0	65.098	50	22	6	0.40	
FBN40B16D32	16	32	10×3.3	8	71.0	65.098	50	22	6	0.40	
FBN40B17D14	17	14	5×2.3	6	76.0	69.116	54	22	6	0.46	
FBN40B17D15	17	15	5×2.3	6	76.0	69.116	54	22	6	0.46	
FBN40B17D16	17	16	5×2.3	6	76.0	69.116	54	22	6	0.46	
FBN40B17D17	17	17	5×2.3	6	76.0	69.116	54	22	6	0.46	
FBN40B17D18	17	18	6×2.8	6	76.0	69.116	54	22	6	0.46	
FBN40B17D19	17	19	6×2.8	6	76.0	69.116	54	22	6	0.46	
FBN40B17D20	17	20	6×2.8	6	76.0	69.116	54	22	6	0.46	
FBN40B17D22	17	22	6×2.8	6	76.0	69.116	54	22	6	0.46	
FBN40B17D24	17	24	8×3.3	8	76.0	69.116	54	22	6	0.46	
FBN40B17D25	17	25	8×3.3	8	76.0	69.116	54	22	6	0.46	
FBN40B17D28	17	28	8×3.3	8	76.0	69.116	54	22	6	0.46	
FBN40B17D30	17	30	8×3.3	8	76.0	69.116	54	22	6	0.46	
FBN40B17D32	17	32	10×3.3	8	76.0	69.116	54	22	6	0.46	
FBN40B17D35	17	35	10×3.3	8	76.0	69.116	54	22	6	0.46	
FBN40B18D14	18	14	5×2.3	6	80.0	73.136	57	22	6	0.51	
FBN40B18D15	18	15	5×2.3	6	80.0	73.136	57	22	6	0.51	
FBN40B18D16	18	16	5×2.3	6	80.0	73.136	57	22	6	0.51	
FBN40B18D17	18	17	5×2.3	6	80.0	73.136	57	22	6	0.51	
FBN40B18D18	18	18	6×2.8	6	80.0	73.136	57	22	6	0.51	
FBN40B18D19	18	19	6×2.8	6	80.0	73.136	57	22	6	0.51	
FBN40B18D20	18	20	6×2.8	6	80.0	73.136	57	22	6	0.51	
FBN40B18D22	18	22	6×2.8	6	80.0	73.136	57	22	6	0.51	
FBN40B18D24	18	24	8×3.3	8	80.0	73.136	57	22	6	0.51	
FBN40B18D25	18	25	8×3.3	8	80.0	73.136	57	22	6	0.51	
FBN40B18D28	18	28	8×3.3	8	80.0	73.136	57	22	6	0.51	
FBN40B18D30	18	30	8×3.3	8	80.0	73.136	57	22	6	0.51	
FBN40B18D32	18	32	10×3.3	8	80.0	73.136	57	22	6	0.51	
FBN40B18D35	18	35	10×3.3	8	80.0	73.136	57	22	6	0.51	
FBN40B18D40	18	40	12×3.3	8	80.0	73.136	57	22	6	0.51	

*M is a set screw. * The seal set screws differ from the usual due to the boss type.

FBN Finished Bore Sprocket D10 K4×1.8 Specification FBN Finished Bore Sprocket New JIS Keyway Specification



Use together with the KANA machine key. Refer to P.334 to P.335

⚠ φ D^{H7} mark setscrew is set at a location other than the keyway (figure at left).

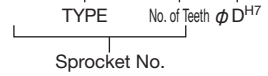
TYPE	FBN40B										
	m Carbon Structural Steel h High-frequency Hardened Teeth										
Product Code	No. of Teeth	φ D ^{H7}	Keyway b×t ²	M	Do	Dp	BD	BL	a	Weight kg	
FBN40B19D14	19	14	5×2.3	6	84.0	77.159	62	22	6	0.59	
FBN40B19D15	19	15	5×2.3	6	84.0	77.159	62	22	6	0.59	
FBN40B19D16	19	16	5×2.3	6	84.0	77.159	62	22	6	0.59	
FBN40B19D17	19	17	5×2.3	6	84.0	77.159	62	22	6	0.59	
FBN40B19D18	19	18	6×2.8	6	84.0	77.159	62	22	6	0.59	
FBN40B19D19	19	19	6×2.8	6	84.0	77.159	62	22	6	0.59	
FBN40B19D20	19	20	6×2.8	6	84.0	77.159	62	22	6	0.59	
FBN40B19D22	19	22	6×2.8	6	84.0	77.159	62	22	6	0.59	
FBN40B19D24	19	24	8×3.3	8	84.0	77.159	62	22	6	0.59	
FBN40B19D25	19	25	8×3.3	8	84.0	77.159	62	22	6	0.59	
FBN40B19D28	19	28	8×3.3	8	84.0	77.159	62	22	6	0.59	
FBN40B19D30	19	30	8×3.3	8	84.0	77.159	62	22	6	0.59	
FBN40B19D32	19	32	10×3.3	8	84.0	77.159	62	22	6	0.59	
FBN40B19D35	19	35	10×3.3	8	84.0	77.159	62	22	6	0.59	
FBN40B19D38	19	38	10×3.3	8	84.0	77.159	62	22	6	0.59	
FBN40B19D40	19	40	12×3.3	8	84.0	77.159	62	22	6	0.59	
FBN40B20D14	20	14	5×2.3	6	88.0	81.184	67	25	7	0.76	
FBN40B20D15	20	15	5×2.3	6	88.0	81.184	67	25	7	0.76	
FBN40B20D16	20	16	5×2.3	6	88.0	81.184	67	25	7	0.76	
FBN40B20D17	20	17	5×2.3	6	88.0	81.184	67	25	7	0.76	
FBN40B20D18	20	18	6×2.8	6	88.0	81.184	67	25	7	0.76	
FBN40B20D19	20	19	6×2.8	6	88.0	81.184	67	25	7	0.76	
FBN40B20D20	20	20	6×2.8	6	88.0	81.184	67	25	7	0.76	
FBN40B20D22	20	22	6×2.8	6	88.0	81.184	67	25	7	0.76	
FBN40B20D24	20	24	8×3.3	8	88.0	81.184	67	25	7	0.76	
FBN40B20D25	20	25	8×3.3	8	88.0	81.184	67	25	7	0.76	
FBN40B20D28	20	28	8×3.3	8	88.0	81.184	67	25	7	0.76	
FBN40B20D30	20	30	8×3.3	8	88.0	81.184	67	25	7	0.76	
FBN40B20D32	20	32	10×3.3	8	88.0	81.184	67	25	7	0.76	
FBN40B20D35	20	35	10×3.3	8	88.0	81.184	67	25	7	0.76	
FBN40B20D38	20	38	10×3.3	8	88.0	81.184	67	25	7	0.76	
FBN40B20D40	20	40	12×3.3	8	88.0	81.184	67	25	7	0.76	
FBN40B20D42	20	42	12×3.3	8	88.0	81.184	67	25	7	0.76	
FBN40B20D45	20	45	14×3.8	10	88.0	81.184	67	25	7	0.76	
FBN40B21D14	21	14	5×2.3	6	92.0	85.211	71	25	7	0.85	
FBN40B21D15	21	15	5×2.3	6	92.0	85.211	71	25	7	0.85	
FBN40B21D16	21	16	5×2.3	6	92.0	85.211	71	25	7	0.85	

*M is a set screw. * The seal set screws differ from the usual due to the boss type.

FBN40B

Order Product Code

FBN40B12D10

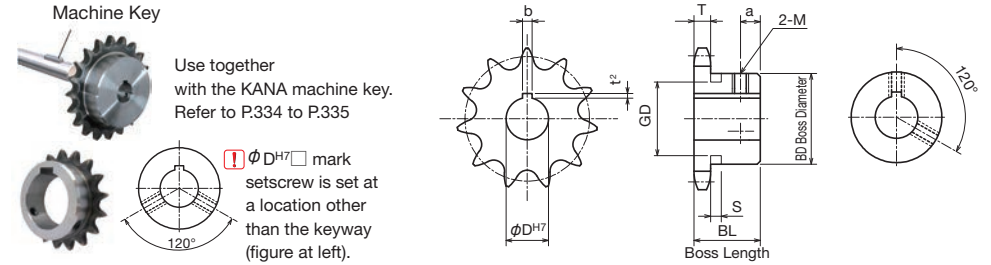


- Chain **No.40**
- Chain Pitch **(P) 12.70mm**
- Roller Link Inner Width **(W) 7.95mm**
- Roller Outside Diameter **(Dr) 7.92mm**
- Tooth Width **(T) 7.2 mm**

TYPE	FBN40B											
				m	Carbon Structural Steel							
				h	High-frequency Hardened Teeth							
Product Code	No. of Teeth	φ D ^{H7}	Keyway b×t ²	M	Do	Dp	BD	BL	a	Weight kg		
FBN40B21D17	21	17	5×2.3	6	92.0	85.211	71	25	7	0.85		
FBN40B21D18	21	18	6×2.8	6	92.0	85.211	71	25	7	0.85		
FBN40B21D19	21	19	6×2.8	6	92.0	85.211	71	25	7	0.85		
FBN40B21D20	21	20	6×2.8	6	92.0	85.211	71	25	7	0.85		
FBN40B21D22	21	22	6×2.8	6	92.0	85.211	71	25	7	0.85		
FBN40B21D24	21	24	8×3.3	8	92.0	85.211	71	25	7	0.85		
FBN40B21D25	21	25	8×3.3	8	92.0	85.211	71	25	7	0.85		
FBN40B21D28	21	28	8×3.3	8	92.0	85.211	71	25	7	0.85		
FBN40B21D30	21	30	8×3.3	8	92.0	85.211	71	25	7	0.85		
FBN40B21D32	21	32	10×3.3	8	92.0	85.211	71	25	7	0.85		
FBN40B21D35	21	35	10×3.3	8	92.0	85.211	71	25	7	0.85		
FBN40B21D38	21	38	10×3.3	8	92.0	85.211	71	25	7	0.85		
FBN40B21D40	21	40	12×3.3	8	92.0	85.211	71	25	7	0.85		
FBN40B21D42	21	42	12×3.3	8	92.0	85.211	71	25	7	0.85		
FBN40B21D45	21	45	14×3.8	10	92.0	85.211	71	25	7	0.85		
FBN40B22D14	22	14	5×2.3	6	96.0	89.239	75	25	7	0.95		
FBN40B22D15	22	15	5×2.3	6	96.0	89.239	75	25	7	0.95		
FBN40B22D16	22	16	5×2.3	6	96.0	89.239	75	25	7	0.95		
FBN40B22D17	22	17	5×2.3	6	96.0	89.239	75	25	7	0.95		
FBN40B22D18	22	18	6×2.8	6	96.0	89.239	75	25	7	0.95		
FBN40B22D19	22	19	6×2.8	6	96.0	89.239	75	25	7	0.95		
FBN40B22D20	22	20	6×2.8	6	96.0	89.239	75	25	7	0.95		
FBN40B22D22	22	22	6×2.8	6	96.0	89.239	75	25	7	0.95		
FBN40B22D24	22	24	8×3.3	8	96.0	89.239	75	25	7	0.95		
FBN40B22D25	22	25	8×3.3	8	96.0	89.239	75	25	7	0.95		
FBN40B22D28	22	28	8×3.3	8	96.0	89.239	75	25	7	0.95		
FBN40B22D30	22	30	8×3.3	8	96.0	89.239	75	25	7	0.95		
FBN40B22D32	22	32	10×3.3	8	96.0	89.239	75	25	7	0.95		
FBN40B22D35	22	35	10×3.3	8	96.0	89.239	75	25	7	0.95		
FBN40B22D38	22	38	10×3.3	8	96.0	89.239	75	25	7	0.95		
FBN40B22D40	22	40	12×3.3	8	96.0	89.239	75	25	7	0.95		
FBN40B22D42	22	42	12×3.3	8	96.0	89.239	75	25	7	0.95		
FBN40B22D45	22	45	14×3.8	10	96.0	89.239	75	25	7	0.95		
FBN40B23D14	23	14	5×2.3	6	100.0	93.268	77	25	7	1.00		
FBN40B23D15	23	15	5×2.3	6	100.0	93.268	77	25	7	1.00		
FBN40B23D16	23	16	5×2.3	6	100.0	93.268	77	25	7	1.00		
FBN40B23D17	23	17	5×2.3	6	100.0	93.268	77	25	7	1.00		
FBN40B23D18	23	18	6×2.8	6	100.0	93.268	77	25	7	1.00		

*M is a set screw. * The seal set screws differ from the usual due to the boss type.

FBN Finished Bore Sprocket D10 K4×1.8 Specification FBN Finished Bore Sprocket New JIS Keyway Specification



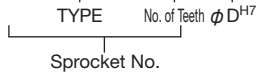
TYPE	FBN40B											
				m	Carbon Structural Steel							
				h	High-frequency Hardened Teeth							
Product Code	No. of Teeth	φ D ^{H7}	Keyway b×t ²	M	Do	Dp	BD	BL	a	Weight kg		
FBN40B23D19	23	19	6×2.8	6	100.0	93.268	77	25	7	1.00		
FBN40B23D20	23	20	6×2.8	6	100.0	93.268	77	25	7	1.00		
FBN40B23D22	23	22	6×2.8	6	100.0	93.268	77	25	7	1.00		
FBN40B23D24	23	24	8×3.3	8	100.0	93.268	77	25	7	1.00		
FBN40B23D25	23	25	8×3.3	8	100.0	93.268	77	25	7	1.00		
FBN40B23D28	23	28	8×3.3	8	100.0	93.268	77	25	7	1.00		
FBN40B23D30	23	30	8×3.3	8	100.0	93.268	77	25	7	1.00		
FBN40B23D32	23	32	10×3.3	8	100.0	93.268	77	25	7	1.00		
FBN40B23D35	23	35	10×3.3	8	100.0	93.268	77	25	7	1.00		
FBN40B23D38	23	38	10×3.3	8	100.0	93.268	77	25	7	1.00		
FBN40B23D40	23	40	12×3.3	8	100.0	93.268	77	25	7	1.00		
FBN40B23D42	23	42	12×3.3	8	100.0	93.268	77	25	7	1.00		
FBN40B23D45	23	45	14×3.8	10	100.0	93.268	77	25	7	1.00		
FBN40B24D14	24	14	5×2.3	6	104.0	97.298	63	25	7	0.84		
FBN40B24D15	24	15	5×2.3	6	104.0	97.298	63	25	7	0.84		
FBN40B24D16	24	16	5×2.3	6	104.0	97.298	63	25	7	0.84		
FBN40B24D17	24	17	5×2.3	6	104.0	97.298	63	25	7	0.84		
FBN40B24D18	24	18	6×2.8	6	104.0	97.298	63	25	7	0.84		
FBN40B24D19	24	19	6×2.8	6	104.0	97.298	63	25	7	0.84		
FBN40B24D20	24	20	6×2.8	6	104.0	97.298	63	25	7	0.84		
FBN40B24D22	24	22	6×2.8	6	104.0	97.298	63	25	7	0.84		
FBN40B24D24	24	24	8×3.3	8	104.0	97.298	63	25	7	0.84		
FBN40B24D25	24	25	8×3.3	8	104.0	97.298	63	25	7	0.84		
FBN40B24D28	24	28	8×3.3	8	104.0	97.298	63	25	7	0.84		
FBN40B24D30	24	30	8×3.3	8	104.0	97.298	63	25	7	0.84		
FBN40B24D32	24	32	10×3.3	8	104.0	97.298	63	25	7	0.84		
FBN40B24D35	24	35	10×3.3	8	104.0	97.298	63	25	7	0.84		
FBN40B24D38	24	38	10×3.3	8	104.0	97.298	63	25	7	0.84		
FBN40B24D40	24	40	12×3.3	8	104.0	97.298	63	25	7	0.84		
FBN40B24D42	24	42	12×3.3	8	104.0	97.298	63	25	7	0.84		
FBN40B25D14	25	14	5×2.3	6	108.0	101.330	63	25	7	0.88		
FBN40B25D15	25	15	5×2.3	6	108.0	101.330	63	25	7	0.88		
FBN40B25D16	25	16	5×2.3	6	108.0	101.330	63	25	7	0.88		
FBN40B25D17	25	17	5×2.3	6	108.0	101.330	63	25	7	0.88		
FBN40B25D18	25	18	6×2.8	6	108.0	101.330	63	25	7	0.88		
FBN40B25D19	25	19	6×2.8	6	108.0	101.330	63	25	7	0.88		
FBN40B25D20	25	20	6×2.8	6	108.0	101.330	63	25	7	0.88		
FBN40B25D22	25	22	6×2.8	6	108.0	101.330	63	25	7	0.88		

*M is a set screw. * The seal set screws differ from the usual due to the boss type.

FBN40B

Order Product Code

FBN40B12D10

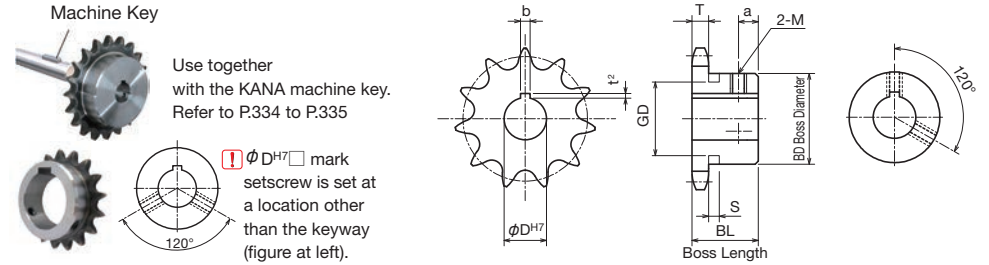


- Chain **No.40**
- Chain Pitch **(P) 12.70mm**
- Roller Link Inner Width **(W) 7.95mm**
- Roller Outside Diameter **(Dr) 7.92mm**
- Tooth Width **(T) 7.2 mm**

TYPE	FBN40B										
				m							
				h							
Product Code	No. of Teeth	φ D ^{H7}	Keyway b×t ²	M	Do	Dp	BD	BL	a	Weight kg	
FBN40B25D24	25	24	8×3.3	8	108.0	101.330	63	25	7	0.88	
FBN40B25D25	25	25	8×3.3	8	108.0	101.330	63	25	7	0.88	
FBN40B25D28	25	28	8×3.3	8	108.0	101.330	63	25	7	0.88	
FBN40B25D30	25	30	8×3.3	8	108.0	101.330	63	25	7	0.88	
FBN40B25D32	25	32	10×3.3	8	108.0	101.330	63	25	7	0.88	
FBN40B25D35	25	35	10×3.3	8	108.0	101.330	63	25	7	0.88	
FBN40B25D38	25	38	10×3.3	8	108.0	101.330	63	25	7	0.88	
FBN40B25D40	25	40	12×3.3	8	108.0	101.330	63	25	7	0.88	
FBN40B25D42	25	42	12×3.3	8	108.0	101.330	63	25	7	0.88	
FBN40B26D14	26	14	5×2.3	6	112.0	105.362	63	25	7	0.92	
FBN40B26D15	26	15	5×2.3	6	112.0	105.362	63	25	7	0.92	
FBN40B26D16	26	16	5×2.3	6	112.0	105.362	63	25	7	0.92	
FBN40B26D17	26	17	5×2.3	6	112.0	105.362	63	25	7	0.92	
FBN40B26D18	26	18	6×2.8	6	112.0	105.362	63	25	7	0.92	
FBN40B26D19	26	19	6×2.8	6	112.0	105.362	63	25	7	0.92	
FBN40B26D20	26	20	6×2.8	6	112.0	105.362	63	25	7	0.92	
FBN40B26D22	26	22	6×2.8	6	112.0	105.362	63	25	7	0.92	
FBN40B26D24	26	24	8×3.3	8	112.0	105.362	63	25	7	0.92	
FBN40B26D25	26	25	8×3.3	8	112.0	105.362	63	25	7	0.92	
FBN40B26D28	26	28	8×3.3	8	112.0	105.362	63	25	7	0.92	
FBN40B26D30	26	30	8×3.3	8	112.0	105.362	63	25	7	0.92	
FBN40B26D32	26	32	10×3.3	8	112.0	105.362	63	25	7	0.92	
FBN40B26D35	26	35	10×3.3	8	112.0	105.362	63	25	7	0.92	
FBN40B26D38	26	38	10×3.3	8	112.0	105.362	63	25	7	0.92	
FBN40B26D40	26	40	12×3.3	8	112.0	105.362	63	25	7	0.92	
FBN40B26D42	26	42	12×3.3	8	112.0	105.362	63	25	7	0.92	
FBN40B27D14	27	14	5×2.3	6	116.0	109.395	63	25	7	0.96	
FBN40B27D15	27	15	5×2.3	6	116.0	109.395	63	25	7	0.96	
FBN40B27D16	27	16	5×2.3	6	116.0	109.395	63	25	7	0.96	
FBN40B27D17	27	17	5×2.3	6	116.0	109.395	63	25	7	0.96	
FBN40B27D18	27	18	6×2.8	6	116.0	109.395	63	25	7	0.96	
FBN40B27D19	27	19	6×2.8	6	116.0	109.395	63	25	7	0.96	
FBN40B27D20	27	20	6×2.8	6	116.0	109.395	63	25	7	0.96	
FBN40B27D22	27	22	6×2.8	6	116.0	109.395	63	25	7	0.96	
FBN40B27D24	27	24	8×3.3	8	116.0	109.395	63	25	7	0.96	
FBN40B27D25	27	25	8×3.3	8	116.0	109.395	63	25	7	0.96	
FBN40B27D28	27	28	8×3.3	8	116.0	109.395	63	25	7	0.96	
FBN40B27D30	27	30	8×3.3	8	116.0	109.395	63	25	7	0.96	

*M is a set screw. * The seal set screws differ from the usual due to the boss type.

FBN Finished Bore Sprocket D10 K4×1.8 Specification FBN Finished Bore Sprocket New JIS Keyway Specification



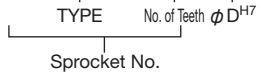
TYPE	FBN40B										
				m							
				h							
Product Code	No. of Teeth	φ D ^{H7}	Keyway b×t ²	M	Do	Dp	BD	BL	a	Weight kg	
FBN40B27D32	27	32	10×3.3	8	116.0	109.395	63	25	7	0.96	
FBN40B27D35	27	35	10×3.3	8	116.0	109.395	63	25	7	0.96	
FBN40B27D38	27	38	10×3.3	8	116.0	109.395	63	25	7	0.96	
FBN40B27D40	27	40	12×3.3	8	116.0	109.395	63	25	7	0.96	
FBN40B27D42	27	42	12×3.3	8	116.0	109.395	63	25	7	0.96	
FBN40B28D14	28	14	5×2.3	6	120.0	113.429	63	25	7	1.00	
FBN40B28D15	28	15	5×2.3	6	120.0	113.429	63	25	7	1.00	
FBN40B28D16	28	16	5×2.3	6	120.0	113.429	63	25	7	1.00	
FBN40B28D17	28	17	5×2.3	6	120.0	113.429	63	25	7	1.00	
FBN40B28D18	28	18	6×2.8	6	120.0	113.429	63	25	7	1.00	
FBN40B28D19	28	19	6×2.8	6	120.0	113.429	63	25	7	1.00	
FBN40B28D20	28	20	6×2.8	6	120.0	113.429	63	25	7	1.00	
FBN40B28D22	28	22	6×2.8	6	120.0	113.429	63	25	7	1.00	
FBN40B28D24	28	24	8×3.3	8	120.0	113.429	63	25	7	1.00	
FBN40B28D25	28	25	8×3.3	8	120.0	113.429	63	25	7	1.00	
FBN40B28D28	28	28	8×3.3	8	120.0	113.429	63	25	7	1.00	
FBN40B28D30	28	30	8×3.3	8	120.0	113.429	63	25	7	1.00	
FBN40B28D32	28	32	10×3.3	8	120.0	113.429	63	25	7	1.00	
FBN40B28D35	28	35	10×3.3	8	120.0	113.429	63	25	7	1.00	
FBN40B28D38	28	38	10×3.3	8	120.0	113.429	63	25	7	1.00	
FBN40B28D40	28	40	12×3.3	8	120.0	113.429	63	25	7	1.00	
FBN40B28D42	28	42	12×3.3	8	120.0	113.429	63	25	7	1.00	
FBN40B29D25	29	25	8×3.3	8	124.0	117.463	63	25	7	1.00	
FBN40B30D14	30	14	5×2.3	6	128.0	121.498	63	25	7	1.10	
FBN40B30D15	30	15	5×2.3	6	128.0	121.498	63	25	7	1.10	
FBN40B30D16	30	16	5×2.3	6	128.0	121.498	63	25	7	1.10	
FBN40B30D17	30	17	5×2.3	6	128.0	121.498	63	25	7	1.10	
FBN40B30D18	30	18	6×2.8	6	128.0	121.498	63	25	7	1.10	
FBN40B30D19	30	19	6×2.8	6	128.0	121.498	63	25	7	1.10	
FBN40B30D20	30	20	6×2.8	6	128.0	121.498	63	25	7	1.10	
FBN40B30D22	30	22	6×2.8	6	128.0	121.498	63	25	7	1.10	
FBN40B30D24	30	24	8×3.3	8	128.0	121.498	63	25	7	1.10	
FBN40B30D25	30	25	8×3.3	8	128.0	121.498	63	25	7	1.10	
FBN40B30D28	30	28	8×3.3	8	128.0	121.498	63	25	7	1.10	
FBN40B30D30	30	30	8×3.3	8	128.0	121.498	63	25	7	1.10	
FBN40B30D32	30	32	10×3.3	8	128.0	121.498	63	25	7	1.10	
FBN40B30D35	30	35	10×3.3	8	128.0	121.498	63	25	7	1.10	
FBN40B30D38	30	38	10×3.3	8	128.0	121.498	63	25	7	1.10	

*M is a set screw. * The seal set screws differ from the usual due to the boss type.

FBN40B

Order Product Code

FBN40B12D10



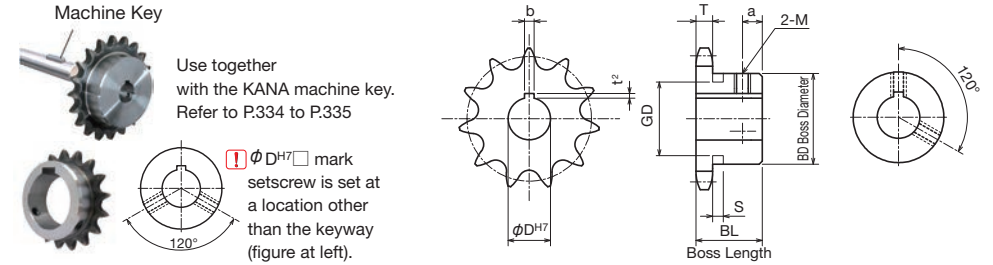
- ChainNo.40
- Chain Pitch(P) 12.70mm
- Roller Link Inner Width(W) 7.95mm
- Roller Outside Diameter(Dr) 7.92mm
- Tooth Width(T) 7.2 mm

TYPE	FBN40B									
Product Code	No. of Teeth	φ D ^{H7}	Keyway b×t ²	M	Do	Dp	BD	BL	a	Weight kg
FBN40B30D40	30	40	12×3.3	8	128.0	121.498	63	25	7	1.10
FBN40B30D42	30	42	12×3.3	8	128.0	121.498	63	25	7	1.10
FBN40B32D20	32	20	6×2.8	6	137.0	129.569	68	28	10	1.30
FBN40B32D22	32	22	6×2.8	6	137.0	129.569	68	28	10	1.30
FBN40B32D24	32	24	8×3.3	8	137.0	129.569	68	28	10	1.30
FBN40B32D25	32	25	8×3.3	8	137.0	129.569	68	28	10	1.30
FBN40B32D28	32	28	8×3.3	8	137.0	129.569	68	28	10	1.30
FBN40B32D30	32	30	8×3.3	8	137.0	129.569	68	28	10	1.30
FBN40B32D32	32	32	10×3.3	8	137.0	129.569	68	28	10	1.30
FBN40B32D35	32	35	10×3.3	8	137.0	129.569	68	28	10	1.30
FBN40B32D40	32	40	12×3.3	8	137.0	129.569	68	28	10	1.30
FBN40B34D20	34	20	6×2.8	6	145.0	137.642	68	28	10	1.30
FBN40B34D22	34	22	6×2.8	6	145.0	137.642	68	28	10	1.30
FBN40B34D24	34	24	8×3.3	8	145.0	137.642	68	28	10	1.30
FBN40B34D25	34	25	8×3.3	8	145.0	137.642	68	28	10	1.30
FBN40B34D28	34	28	8×3.3	8	145.0	137.642	68	28	10	1.30
FBN40B34D30	34	30	8×3.3	8	145.0	137.642	68	28	10	1.30
FBN40B34D32	34	32	10×3.3	8	145.0	137.642	68	28	10	1.30
FBN40B34D35	34	35	10×3.3	8	145.0	137.642	68	28	10	1.30
FBN40B34D40	34	40	12×3.3	8	145.0	137.642	68	28	10	1.30
FBN40B35D20	35	20	6×2.8	6	149.0	141.679	68	28	10	1.40
FBN40B35D22	35	22	6×2.8	6	149.0	141.679	68	28	10	1.40
FBN40B35D24	35	24	8×3.3	8	149.0	141.679	68	28	10	1.40
FBN40B35D25	35	25	8×3.3	8	149.0	141.679	68	28	10	1.40
FBN40B35D28	35	28	8×3.3	8	149.0	141.679	68	28	10	1.40
FBN40B35D30	35	30	8×3.3	8	149.0	141.679	68	28	10	1.40
FBN40B35D32	35	32	10×3.3	8	149.0	141.679	68	28	10	1.40
FBN40B35D35	35	35	10×3.3	8	149.0	141.679	68	28	10	1.40
FBN40B35D40	35	40	12×3.3	8	149.0	141.679	68	28	10	1.40
FBN40B36D20	36	20	6×2.8	6	153.0	145.716	68	28	10	1.50
FBN40B36D22	36	22	6×2.8	6	153.0	145.716	68	28	10	1.50
FBN40B36D24	36	24	8×3.3	8	153.0	145.716	68	28	10	1.50
FBN40B36D25	36	25	8×3.3	8	153.0	145.716	68	28	10	1.50
FBN40B36D28	36	28	8×3.3	8	153.0	145.716	68	28	10	1.50
FBN40B36D30	36	30	8×3.3	8	153.0	145.716	68	28	10	1.50
FBN40B36D32	36	32	10×3.3	8	153.0	145.716	68	28	10	1.50
FBN40B36D35	36	35	10×3.3	8	153.0	145.716	68	28	10	1.50
FBN40B36D40	36	40	12×3.3	8	153.0	145.716	68	28	10	1.50

m Carbon Structural Steel
h High-frequency Hardened Teeth

*M is a set screw. * The seal set screws differ from the usual due to the boss type.

FBN Finished Bore Sprocket D10 K4×1.8 Specification FBN Finished Bore Sprocket New JIS Keyway Specification



Use together with the KANA machine key. Refer to P.334 to P.335

! φ D^{H7} mark setscrew is set at a location other than the keyway (figure at left).

TYPE	FBN40B									
Product Code	No. of Teeth	φ D ^{H7}	Keyway b×t ²	M	Do	Dp	BD	BL	a	Weight kg
FBN40B37D35	37	35	10×3.3	8	157.0	149.754	68	28	10	1.55
FBN40B38D24	38	24	8×3.3	8	161.0	153.791	68	28	10	1.60
FBN40B38D25	38	25	8×3.3	8	161.0	153.791	68	28	10	1.60
FBN40B38D28	38	28	8×3.3	8	161.0	153.791	68	28	10	1.60
FBN40B38D30	38	30	8×3.3	8	161.0	153.791	68	28	10	1.60
FBN40B38D32	38	32	10×3.3	8	161.0	153.791	68	28	10	1.60
FBN40B38D35	38	35	10×3.3	8	161.0	153.791	68	28	10	1.60
FBN40B38D40	38	40	12×3.3	8	161.0	153.791	68	28	10	1.60
FBN40B40D20	40	20	6×2.8	6	169.0	161.868	68	28	10	1.70
FBN40B40D25	40	25	8×3.3	8	169.0	161.868	68	28	10	1.70
FBN40B40D28	40	28	8×3.3	8	169.0	161.868	68	28	10	1.70
FBN40B40D30	40	30	8×3.3	8	169.0	161.868	68	28	10	1.70
FBN40B40D32	40	32	10×3.3	8	169.0	161.868	68	28	10	1.70
FBN40B40D35	40	35	10×3.3	8	169.0	161.868	68	28	10	1.70
FBN40B40D40	40	40	12×3.3	8	169.0	161.868	68	28	10	1.70
FBN40B42D30	42	30	8×3.3	8	177.0	169.945	73	32	10	2.05
FBN40B42D32	42	32	10×3.3	8	177.0	169.945	73	32	10	2.05
FBN40B42D35	42	35	10×3.3	8	177.0	169.945	73	32	10	2.05
FBN40B42D40	42	40	12×3.3	8	177.0	169.945	73	32	10	2.05
FBN40B42D45	42	45	14×3.8	10	177.0	169.945	73	32	10	2.05
FBN40B45D30	45	30	8×3.3	8	189.0	182.062	73	32	10	2.25
FBN40B45D32	45	32	10×3.3	8	189.0	182.062	73	32	10	2.25
FBN40B45D35	45	35	10×3.3	8	189.0	182.062	73	32	10	2.25
FBN40B45D40	45	40	12×3.3	8	189.0	182.062	73	32	10	2.25
FBN40B45D45	45	45	14×3.8	10	189.0	182.062	73	32	10	2.25
FBN40B48D30	48	30	8×3.3	8	201.0	194.180	73	32	10	2.45
FBN40B48D32	48	32	10×3.3	8	201.0	194.180	73	32	10	2.45
FBN40B48D35	48	35	10×3.3	8	201.0	194.180	73	32	10	2.45
FBN40B48D40	48	40	12×3.3	8	201.0	194.180	73	32	10	2.45
FBN40B48D45	48	45	14×3.8	10	201.0	194.180	73	32	10	2.45
FBN40B50D25	50	25	8×3.3	8	209.0	202.260	73	32	10	2.60
FBN40B50D30	50	30	8×3.3	8	209.0	202.260	73	32	10	2.60
FBN40B50D32	50	32	10×3.3	8	209.0	202.260	73	32	10	2.60
FBN40B50D35	50	35	10×3.3	8	209.0	202.260	73	32	10	2.60
FBN40B50D40	50	40	12×3.3	8	209.0	202.260	73	32	10	2.60
FBN40B50D45	50	45	14×3.8	10	209.0	202.260	73	32	10	2.60
FBN40B60D30	60	30	8×3.3	8	250.0	242.663	73	32	10	3.40

m Carbon Structural Steel
h High-frequency Hardened Teeth

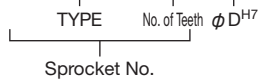
*M is a set screw. * The seal set screws differ from the usual due to the boss type.

FBN50B

FBN Finished Bore Sprocket New JIS Keyway Specification

Order Product Code

FBN50B20D22

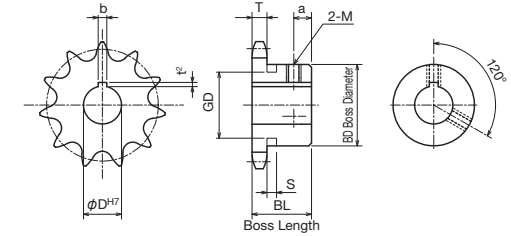


- Chain **No.50**
- Chain Pitch **(P) 15.875 mm**
- Roller Link Inner Width ... **(W) 9.53 mm**
- Roller Outside Diameter ... **(Dr) 10.16 mm**
- Tooth Width **(T) 8.7 mm**



⚠ Sprockets with a ★ symbol for BD have a channel in the boss exterior.

No. of Teeth	S	GD
9	6.4	29
10	6.4	34
11	6.4	39
12	6.4	44
13	6.4	49



m Carbon Structural Steel
h High-frequency Hardened Teeth

TYPE	FBN50B										
Product Code	No. of Teeth	φ D ^{H7}	Keyway b×t ²	M	Do	Dp	BD	BL	a	Weight kg	
FBN50B9D16	9	16	5×2.3	6	53.0	46.415	★34	25	5	0.20	
FBN50B9D17	9	17	5×2.3	6	53.0	46.415	★34	25	5	0.20	
FBN50B9D18	9	18	6×2.8	6	53.0	46.415	★34	25	5	0.20	
FBN50B9D19	9	19	6×2.8	6	53.0	46.415	★34	25	5	0.20	
FBN50B10D15	10	15	5×2.3	6	58.0	51.373	★40	25	5	0.27	
FBN50B10D16	10	16	5×2.3	6	58.0	51.373	★40	25	5	0.27	
FBN50B10D17	10	17	5×2.3	6	58.0	51.373	★40	25	5	0.27	
FBN50B10D18	10	18	6×2.8	6	58.0	51.373	★40	25	5	0.27	
FBN50B10D19	10	19	6×2.8	6	58.0	51.373	★40	25	5	0.27	
FBN50B10D20	10	20	6×2.8	6	58.0	51.373	★40	25	5	0.27	
FBN50B10D22	10	22	6×2.8	6	58.0	51.373	★40	25	5	0.27	
FBN50B10D24	10	24	8×3.3	*6	58.0	51.373	★40	25	5	0.27	
FBN50B10D25	10	25	8×3.3	*6	58.0	51.373	★40	25	5	0.27	
FBN50B11D15	11	15	5×2.3	6	64.0	56.348	★45.5	25	5	0.33	
FBN50B11D16	11	16	5×2.3	6	64.0	56.348	★45.5	25	5	0.33	
FBN50B11D17	11	17	5×2.3	6	64.0	56.348	★45.5	25	5	0.33	
FBN50B11D18	11	18	6×2.8	6	64.0	56.348	★45.5	25	5	0.33	
FBN50B11D19	11	19	6×2.8	6	64.0	56.348	★45.5	25	5	0.33	
FBN50B11D20	11	20	6×2.8	6	64.0	56.348	★45.5	25	5	0.33	
FBN50B11D22	11	22	6×2.8	6	64.0	56.348	★45.5	25	5	0.33	
FBN50B11D24	11	24	8×3.3	*6	64.0	56.348	★45.5	25	5	0.33	
FBN50B11D25	11	25	8×3.3	*6	64.0	56.348	★45.5	25	5	0.33	
FBN50B12D15	12	15	5×2.3	6	69.0	61.336	★50	25	5	0.41	
FBN50B12D16	12	16	5×2.3	6	69.0	61.336	★50	25	5	0.41	
FBN50B12D17	12	17	5×2.3	6	69.0	61.336	★50	25	5	0.41	
FBN50B12D18	12	18	6×2.8	6	69.0	61.336	★50	25	5	0.41	
FBN50B12D19	12	19	6×2.8	6	69.0	61.336	★50	25	5	0.41	
FBN50B12D20	12	20	6×2.8	6	69.0	61.336	★50	25	5	0.41	
FBN50B12D22	12	22	6×2.8	6	69.0	61.336	★50	25	5	0.41	
FBN50B12D24	12	24	8×3.3	*6	69.0	61.336	★50	25	5	0.41	
FBN50B12D25	12	25	8×3.3	*6	69.0	61.336	★50	25	5	0.41	
FBN50B12D28	12	28	8×3.3	*6	69.0	61.336	★50	25	5	0.41	
FBN50B12D30	12	30	8×3.3	*6	69.0	61.336	★50	25	5	0.41	
FBN50B12D32	12	32	10×3.3	*6	69.0	61.336	★50	25	5	0.41	

*M is a set screw. * The seal set screws differ from the usual due to the boss type.

TYPE	FBN50B										
Product Code	No. of Teeth	φ D ^{H7}	Keyway b×t ²	M	Do	Dp	BD	BL	a	Weight kg	
FBN50B13D14	13	14	5×2.3	6	74.0	66.335	★51	25	5	0.46	
FBN50B13D15	13	15	5×2.3	6	74.0	66.335	★51	25	5	0.46	
FBN50B13D16	13	16	5×2.3	6	74.0	66.335	★51	25	5	0.46	
FBN50B13D17	13	17	5×2.3	6	74.0	66.335	★51	25	5	0.46	
FBN50B13D18	13	18	6×2.8	6	74.0	66.335	★51	25	5	0.46	
FBN50B13D19	13	19	6×2.8	6	74.0	66.335	★51	25	5	0.46	
FBN50B13D20	13	20	6×2.8	6	74.0	66.335	★51	25	5	0.46	
FBN50B13D22	13	22	6×2.8	6	74.0	66.335	★51	25	5	0.46	
FBN50B13D24	13	24	8×3.3	*6	74.0	66.335	★51	25	5	0.46	
FBN50B13D25	13	25	8×3.3	*6	74.0	66.335	★51	25	5	0.46	
FBN50B13D28	13	28	8×3.3	*6	74.0	66.335	★51	25	5	0.46	
FBN50B13D30	13	30	8×3.3	*6	74.0	66.335	★51	25	5	0.46	
FBN50B13D32	13	32	10×3.3	*6	74.0	66.335	★51	25	5	0.46	
FBN50B14D14	14	14	5×2.3	6	79.0	71.342	52	25	7	0.52	
FBN50B14D15	14	15	5×2.3	6	79.0	71.342	52	25	7	0.52	
FBN50B14D16	14	16	5×2.3	6	79.0	71.342	52	25	7	0.52	
FBN50B14D17	14	17	5×2.3	6	79.0	71.342	52	25	7	0.52	
FBN50B14D18	14	18	6×2.8	6	79.0	71.342	52	25	7	0.52	
FBN50B14D19	14	19	6×2.8	6	79.0	71.342	52	25	7	0.52	
FBN50B14D20	14	20	6×2.8	6	79.0	71.342	52	25	7	0.52	
FBN50B14D22	14	22	6×2.8	6	79.0	71.342	52	25	7	0.52	
FBN50B14D24	14	24	8×3.3	8	79.0	71.342	52	25	7	0.52	
FBN50B14D25	14	25	8×3.3	8	79.0	71.342	52	25	7	0.52	
FBN50B14D28	14	28	8×3.3	8	79.0	71.342	52	25	7	0.52	
FBN50B14D30	14	30	8×3.3	8	79.0	71.342	52	25	7	0.52	
FBN50B14D32	14	32	10×3.3	8	79.0	71.342	52	25	7	0.52	
FBN50B14D35	14	35	10×3.3	*6	79.0	71.342	52	25	7	0.52	
FBN50B15D14	15	14	5×2.3	6	84.0	76.355	57	25	7	0.62	
FBN50B15D15	15	15	5×2.3	6	84.0	76.355	57	25	7	0.62	
FBN50B15D16	15	16	5×2.3	6	84.0	76.355	57	25	7	0.62	
FBN50B15D17	15	17	5×2.3	6	84.0	76.355	57	25	7	0.62	
FBN50B15D18	15	18	6×2.8	6	84.0	76.355	57	25	7	0.62	
FBN50B15D19	15	19	6×2.8	6	84.0	76.355	57	25	7	0.62	
FBN50B15D20	15	20	6×2.8	6	84.0	76.355	57	25	7	0.62	

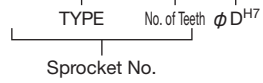
*M is a set screw. * The seal set screws differ from the usual due to the boss type.

FBN50B

FBN Finished Bore Sprocket New JIS Keyway Specification

Order Product Code

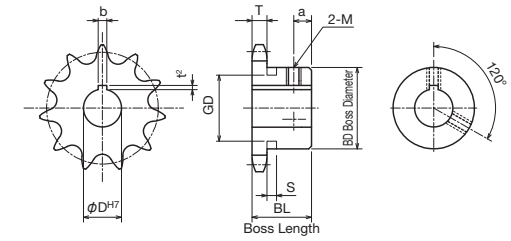
FBN50B20D22



- Chain **No.50**
- Chain Pitch **(P) 15.875 mm**
- Roller Link Inner Width ... **(W) 9.53 mm**
- Roller Outside Diameter ... **(Dr) 10.16 mm**
- Tooth Width **(T) 8.7 mm**

TYPE	FBN50B									
	m Carbon Structural Steel h High-frequency Hardened Teeth									
Product Code	No. of Teeth	φ D ^{H7}	Keyway b×t ²	M	Do	Dp	BD	BL	a	Weight kg
FBN50B15D22	15	22	6×2.8	6	84.0	76.355	57	25	7	0.62
FBN50B15D24	15	24	8×3.3	8	84.0	76.355	57	25	7	0.62
FBN50B15D25	15	25	8×3.3	8	84.0	76.355	57	25	7	0.62
FBN50B15D28	15	28	8×3.3	8	84.0	76.355	57	25	7	0.62
FBN50B15D30	15	30	8×3.3	8	84.0	76.355	57	25	7	0.62
FBN50B15D32	15	32	10×3.3	8	84.0	76.355	57	25	7	0.62
FBN50B15D35	15	35	10×3.3	8	84.0	76.355	57	25	7	0.62
FBN50B15D38	15	38	10×3.3	8	84.0	76.355	57	25	7	0.62
FBN50B16D14	16	14	5×2.3	6	89.0	81.373	62	25	7	0.72
FBN50B16D15	16	15	5×2.3	6	89.0	81.373	62	25	7	0.72
FBN50B16D16	16	16	5×2.3	6	89.0	81.373	62	25	7	0.72
FBN50B16D17	16	17	5×2.3	6	89.0	81.373	62	25	7	0.72
FBN50B16D18	16	18	6×2.8	6	89.0	81.373	62	25	7	0.72
FBN50B16D19	16	19	6×2.8	6	89.0	81.373	62	25	7	0.72
FBN50B16D20	16	20	6×2.8	6	89.0	81.373	62	25	7	0.72
FBN50B16D22	16	22	6×2.8	6	89.0	81.373	62	25	7	0.72
FBN50B16D24	16	24	8×3.3	8	89.0	81.373	62	25	7	0.72
FBN50B16D25	16	25	8×3.3	8	89.0	81.373	62	25	7	0.72
FBN50B16D28	16	28	8×3.3	8	89.0	81.373	62	25	7	0.72
FBN50B16D30	16	30	8×3.3	8	89.0	81.373	62	25	7	0.72
FBN50B16D32	16	32	10×3.3	8	89.0	81.373	62	25	7	0.72
FBN50B16D35	16	35	10×3.3	8	89.0	81.373	62	25	7	0.72
FBN50B16D38	16	38	10×3.3	8	89.0	81.373	62	25	7	0.72
FBN50B16D40	16	40	12×3.3	8	89.0	81.373	62	25	7	0.72
FBN50B17D14	17	14	5×2.3	6	94.0	86.395	67	25	7	0.83
FBN50B17D15	17	15	5×2.3	6	94.0	86.395	67	25	7	0.83
FBN50B17D16	17	16	5×2.3	6	94.0	86.395	67	25	7	0.83
FBN50B17D17	17	17	5×2.3	6	94.0	86.395	67	25	7	0.83
FBN50B17D18	17	18	6×2.8	6	94.0	86.395	67	25	7	0.83
FBN50B17D19	17	19	6×2.8	6	94.0	86.395	67	25	7	0.83
FBN50B17D20	17	20	6×2.8	6	94.0	86.395	67	25	7	0.83
FBN50B17D22	17	22	6×2.8	6	94.0	86.395	67	25	7	0.83
FBN50B17D24	17	24	8×3.3	8	94.0	86.395	67	25	7	0.83
FBN50B17D25	17	25	8×3.3	8	94.0	86.395	67	25	7	0.83

*M is a set screw. * The seal set screws differ from the usual due to the boss type.



TYPE	FBN50B									
	m Carbon Structural Steel h High-frequency Hardened Teeth									
Product Code	No. of Teeth	φ D ^{H7}	Keyway b×t ²	M	Do	Dp	BD	BL	a	Weight kg
FBN50B17D28	17	28	8×3.3	8	94.0	86.395	67	25	7	0.83
FBN50B17D30	17	30	8×3.3	8	94.0	86.395	67	25	7	0.83
FBN50B17D32	17	32	10×3.3	8	94.0	86.395	67	25	7	0.83
FBN50B17D35	17	35	10×3.3	8	94.0	86.395	67	25	7	0.83
FBN50B17D38	17	38	10×3.3	8	94.0	86.395	67	25	7	0.83
FBN50B17D40	17	40	12×3.3	8	94.0	86.395	67	25	7	0.83
FBN50B17D42	17	42	12×3.3	8	94.0	86.395	67	25	7	0.83
FBN50B17D45	17	45	14×3.8	10	94.0	86.395	67	25	7	0.83
FBN50B18D14	18	14	5×2.3	6	100.0	91.420	72	28	8	1.00
FBN50B18D15	18	15	5×2.3	6	100.0	91.420	72	28	8	1.00
FBN50B18D16	18	16	5×2.3	6	100.0	91.420	72	28	8	1.00
FBN50B18D17	18	17	5×2.3	6	100.0	91.420	72	28	8	1.00
FBN50B18D18	18	18	6×2.8	6	100.0	91.420	72	28	8	1.00
FBN50B18D19	18	19	6×2.8	6	100.0	91.420	72	28	8	1.00
FBN50B18D20	18	20	6×2.8	6	100.0	91.420	72	28	8	1.00
FBN50B18D22	18	22	6×2.8	6	100.0	91.420	72	28	8	1.00
FBN50B18D24	18	24	8×3.3	8	100.0	91.420	72	28	8	1.00
FBN50B18D25	18	25	8×3.3	8	100.0	91.420	72	28	8	1.00
FBN50B18D28	18	28	8×3.3	8	100.0	91.420	72	28	8	1.00
FBN50B18D30	18	30	8×3.3	8	100.0	91.420	72	28	8	1.00
FBN50B18D32	18	32	10×3.3	8	100.0	91.420	72	28	8	1.00
FBN50B18D35	18	35	10×3.3	8	100.0	91.420	72	28	8	1.00
FBN50B18D38	18	38	10×3.3	8	100.0	91.420	72	28	8	1.00
FBN50B18D40	18	40	12×3.3	8	100.0	91.420	72	28	8	1.00
FBN50B18D42	18	42	12×3.3	8	100.0	91.420	72	28	8	1.00
FBN50B18D45	18	45	14×3.8	10	100.0	91.420	72	28	8	1.00
FBN50B19D14	19	14	5×2.3	6	105.0	96.449	73	28	8	1.10
FBN50B19D15	19	15	5×2.3	6	105.0	96.449	73	28	8	1.10
FBN50B19D16	19	16	5×2.3	6	105.0	96.449	73	28	8	1.10
FBN50B19D17	19	17	5×2.3	6	105.0	96.449	73	28	8	1.10
FBN50B19D18	19	18	6×2.8	6	105.0	96.449	73	28	8	1.10
FBN50B19D19	19	19	6×2.8	6	105.0	96.449	73	28	8	1.10
FBN50B19D20	19	20	6×2.8	6	105.0	96.449	73	28	8	1.10
FBN50B19D22	19	22	6×2.8	6	105.0	96.449	73	28	8	1.10

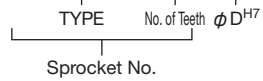
*M is a set screw. * The seal set screws differ from the usual due to the boss type.

FBN50B

FBN Finished Bore Sprocket New JIS Keyway Specification

Order Product Code

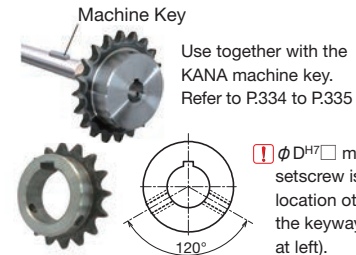
FBN50B20D22



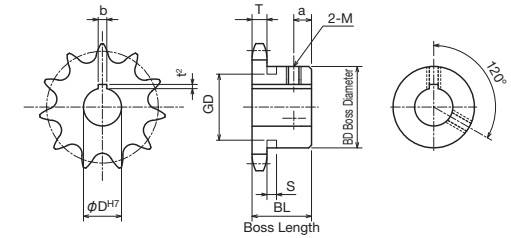
- Chain **No.50**
- Chain Pitch **(P) 15.875 mm**
- Roller Link Inner Width ... **(W) 9.53 mm**
- Roller Outside Diameter ... **(Dr) 10.16 mm**
- Tooth Width **(T) 8.7 mm**

TYPE	FBN50B									
	m Carbon Structural Steel h High-frequency Hardened Teeth									
Product Code	No. of Teeth	ϕ D ^{H7}	Keyway b×t ²	M	Do	Dp	BD	BL	a	Weight kg
FBN50B19D24	19	24	8×3.3	8	105.0	96.449	73	28	8	1.10
FBN50B19D25	19	25	8×3.3	8	105.0	96.449	73	28	8	1.10
FBN50B19D28	19	28	8×3.3	8	105.0	96.449	73	28	8	1.10
FBN50B19D30	19	30	8×3.3	8	105.0	96.449	73	28	8	1.10
FBN50B19D32	19	32	10×3.3	8	105.0	96.449	73	28	8	1.10
FBN50B19D35	19	35	10×3.3	8	105.0	96.449	73	28	8	1.10
FBN50B19D38	19	38	10×3.3	8	105.0	96.449	73	28	8	1.10
FBN50B19D40	19	40	12×3.3	8	105.0	96.449	73	28	8	1.10
FBN50B19D42	19	42	12×3.3	8	105.0	96.449	73	28	8	1.10
FBN50B19D45	19	45	14×3.8	10	105.0	96.449	73	28	8	1.10
FBN50B20D14	20	14	5×2.3	6	110.0	101.480	73	28	8	1.20
FBN50B20D15	20	15	5×2.3	6	110.0	101.480	73	28	8	1.20
FBN50B20D16	20	16	5×2.3	6	110.0	101.480	73	28	8	1.20
FBN50B20D17	20	17	5×2.3	6	110.0	101.480	73	28	8	1.20
FBN50B20D18	20	18	6×2.8	6	110.0	101.480	73	28	8	1.20
FBN50B20D19	20	19	6×2.8	6	110.0	101.480	73	28	8	1.20
FBN50B20D20	20	20	6×2.8	6	110.0	101.480	73	28	8	1.20
FBN50B20D22	20	22	6×2.8	6	110.0	101.480	73	28	8	1.20
FBN50B20D24	20	24	8×3.3	8	110.0	101.480	73	28	8	1.20
FBN50B20D25	20	25	8×3.3	8	110.0	101.480	73	28	8	1.20
FBN50B20D28	20	28	8×3.3	8	110.0	101.480	73	28	8	1.20
FBN50B20D30	20	30	8×3.3	8	110.0	101.480	73	28	8	1.20
FBN50B20D32	20	32	10×3.3	8	110.0	101.480	73	28	8	1.20
FBN50B20D35	20	35	10×3.3	8	110.0	101.480	73	28	8	1.20
FBN50B20D38	20	38	10×3.3	8	110.0	101.480	73	28	8	1.20
FBN50B20D40	20	40	12×3.3	8	110.0	101.480	73	28	8	1.20
FBN50B20D42	20	42	12×3.3	8	110.0	101.480	73	28	8	1.20
FBN50B20D45	20	45	14×3.8	10	110.0	101.480	73	28	8	1.20
FBN50B21D17	21	17	5×2.3	6	115.0	106.513	73	28	8	1.20
FBN50B21D18	21	18	6×2.8	6	115.0	106.513	73	28	8	1.20
FBN50B21D19	21	19	6×2.8	6	115.0	106.513	73	28	8	1.20
FBN50B21D20	21	20	6×2.8	6	115.0	106.513	73	28	8	1.20

*M is a set screw. * The seal set screws differ from the usual due to the boss type.



! ϕ D^{H7} mark setscrew is set at a location other than the keyway (figure at left).



TYPE	FBN50B									
	m Carbon Structural Steel h High-frequency Hardened Teeth									
Product Code	No. of Teeth	ϕ D ^{H7}	Keyway b×t ²	M	Do	Dp	BD	BL	a	Weight kg
FBN50B21D22	21	22	6×2.8	6	115.0	106.513	73	28	8	1.20
FBN50B21D24	21	24	8×3.3	8	115.0	106.513	73	28	8	1.20
FBN50B21D25	21	25	8×3.3	8	115.0	106.513	73	28	8	1.20
FBN50B21D28	21	28	8×3.3	8	115.0	106.513	73	28	8	1.20
FBN50B21D30	21	30	8×3.3	8	115.0	106.513	73	28	8	1.20
FBN50B21D32	21	32	10×3.3	8	115.0	106.513	73	28	8	1.20
FBN50B21D35	21	35	10×3.3	8	115.0	106.513	73	28	8	1.20
FBN50B21D38	21	38	10×3.3	8	115.0	106.513	73	28	8	1.20
FBN50B21D40	21	40	12×3.3	8	115.0	106.513	73	28	8	1.20
FBN50B21D42	21	42	12×3.3	8	115.0	106.513	73	28	8	1.20
FBN50B21D45	21	45	14×3.8	10	115.0	106.513	73	28	8	1.20
FBN50B22D17	22	17	5×2.3	6	120.0	111.548	73	28	8	1.30
FBN50B22D18	22	18	6×2.8	6	120.0	111.548	73	28	8	1.30
FBN50B22D19	22	19	6×2.8	6	120.0	111.548	73	28	8	1.30
FBN50B22D20	22	20	6×2.8	6	120.0	111.548	73	28	8	1.30
FBN50B22D22	22	22	6×2.8	6	120.0	111.548	73	28	8	1.30
FBN50B22D24	22	24	8×3.3	8	120.0	111.548	73	28	8	1.30
FBN50B22D25	22	25	8×3.3	8	120.0	111.548	73	28	8	1.30
FBN50B22D28	22	28	8×3.3	8	120.0	111.548	73	28	8	1.30
FBN50B22D30	22	30	8×3.3	8	120.0	111.548	73	28	8	1.30
FBN50B22D32	22	32	10×3.3	8	120.0	111.548	73	28	8	1.30
FBN50B22D35	22	35	10×3.3	8	120.0	111.548	73	28	8	1.30
FBN50B22D38	22	38	10×3.3	8	120.0	111.548	73	28	8	1.30
FBN50B22D40	22	40	12×3.3	8	120.0	111.548	73	28	8	1.30
FBN50B22D42	22	42	12×3.3	8	120.0	111.548	73	28	8	1.30
FBN50B22D45	22	45	14×3.8	10	120.0	111.548	73	28	8	1.30
FBN50B23D17	23	17	5×2.3	6	125.0	116.585	73	28	8	1.30
FBN50B23D18	23	18	6×2.8	6	125.0	116.585	73	28	8	1.30
FBN50B23D19	23	19	6×2.8	6	125.0	116.585	73	28	8	1.30
FBN50B23D20	23	20	6×2.8	6	125.0	116.585	73	28	8	1.30
FBN50B23D22	23	22	6×2.8	6	125.0	116.585	73	28	8	1.30
FBN50B23D24	23	24	8×3.3	8	125.0	116.585	73	28	8	1.30
FBN50B23D25	23	25	8×3.3	8	125.0	116.585	73	28	8	1.30

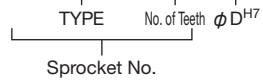
*M is a set screw. * The seal set screws differ from the usual due to the boss type.

FBN50B

FBN Finished Bore Sprocket New JIS Keyway Specification

Order Product Code

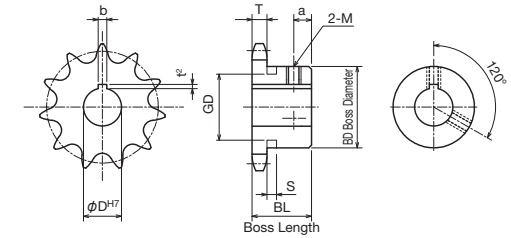
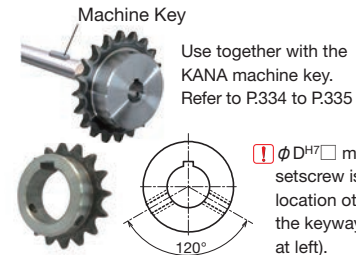
FBN50B20D22



- Chain **No.50**
- Chain Pitch **(P) 15.875 mm**
- Roller Link Inner Width ... **(W) 9.53 mm**
- Roller Outside Diameter ... **(Dr) 10.16 mm**
- Tooth Width **(T) 8.7 mm**

TYPE	FBN50B									
	m Carbon Structural Steel h High-frequency Hardened Teeth									
Product Code	No. of Teeth	ϕ D ^{H7}	Keyway b×t ²	M	Do	Dp	BD	BL	a	Weight kg
FBN50B23D28	23	28	8×3.3	8	125.0	116.585	73	28	8	1.30
FBN50B23D30	23	30	8×3.3	8	125.0	116.585	73	28	8	1.30
FBN50B23D32	23	32	10×3.3	8	125.0	116.585	73	28	8	1.30
FBN50B23D35	23	35	10×3.3	8	125.0	116.585	73	28	8	1.30
FBN50B23D38	23	38	10×3.3	8	125.0	116.585	73	28	8	1.30
FBN50B23D40	23	40	12×3.3	8	125.0	116.585	73	28	8	1.30
FBN50B23D42	23	42	12×3.3	8	125.0	116.585	73	28	8	1.30
FBN50B23D45	23	45	14×3.8	10	125.0	116.585	73	28	8	1.30
FBN50B24D17	24	17	5×2.3	6	130.0	121.623	73	28	8	1.40
FBN50B24D18	24	18	6×2.8	6	130.0	121.623	73	28	8	1.40
FBN50B24D19	24	19	6×2.8	6	130.0	121.623	73	28	8	1.40
FBN50B24D20	24	20	6×2.8	6	130.0	121.623	73	28	8	1.40
FBN50B24D22	24	22	6×2.8	6	130.0	121.623	73	28	8	1.40
FBN50B24D24	24	24	8×3.3	8	130.0	121.623	73	28	8	1.40
FBN50B24D25	24	25	8×3.3	8	130.0	121.623	73	28	8	1.40
FBN50B24D28	24	28	8×3.3	8	130.0	121.623	73	28	8	1.40
FBN50B24D30	24	30	8×3.3	8	130.0	121.623	73	28	8	1.40
FBN50B24D32	24	32	10×3.3	8	130.0	121.623	73	28	8	1.40
FBN50B24D35	24	35	10×3.3	8	130.0	121.623	73	28	8	1.40
FBN50B24D38	24	38	10×3.3	8	130.0	121.623	73	28	8	1.40
FBN50B24D40	24	40	12×3.3	8	130.0	121.623	73	28	8	1.40
FBN50B24D42	24	42	12×3.3	8	130.0	121.623	73	28	8	1.40
FBN50B24D45	24	45	14×3.8	10	130.0	121.623	73	28	8	1.40
FBN50B25D17	25	17	5×2.3	6	135.0	126.662	73	28	8	1.50
FBN50B25D18	25	18	6×2.8	6	135.0	126.662	73	28	8	1.50
FBN50B25D19	25	19	6×2.8	6	135.0	126.662	73	28	8	1.50
FBN50B25D20	25	20	6×2.8	6	135.0	126.662	73	28	8	1.50
FBN50B25D22	25	22	6×2.8	6	135.0	126.662	73	28	8	1.50
FBN50B25D24	25	24	8×3.3	8	135.0	126.662	73	28	8	1.50
FBN50B25D25	25	25	8×3.3	8	135.0	126.662	73	28	8	1.50
FBN50B25D28	25	28	8×3.3	8	135.0	126.662	73	28	8	1.50
FBN50B25D30	25	30	8×3.3	8	135.0	126.662	73	28	8	1.50
FBN50B25D32	25	32	10×3.3	8	135.0	126.662	73	28	8	1.50

*M is a set screw. * The seal set screws differ from the usual due to the boss type.



TYPE	FBN50B									
	m Carbon Structural Steel h High-frequency Hardened Teeth									
Product Code	No. of Teeth	ϕ D ^{H7}	Keyway b×t ²	M	Do	Dp	BD	BL	a	Weight kg
FBN50B25D35	25	35	10×3.3	8	135.0	126.662	73	28	8	1.50
FBN50B25D38	25	38	10×3.3	8	135.0	126.662	73	28	8	1.50
FBN50B25D40	25	40	12×3.3	8	135.0	126.662	73	28	8	1.50
FBN50B25D42	25	42	12×3.3	8	135.0	126.662	73	28	8	1.50
FBN50B25D45	25	45	14×3.8	10	135.0	126.662	73	28	8	1.50
FBN50B26D22	26	22	6×2.8	6	140.0	131.703	73	28	8	1.50
FBN50B26D24	26	24	8×3.3	8	140.0	131.703	73	28	8	1.50
FBN50B26D25	26	25	8×3.3	8	140.0	131.703	73	28	8	1.50
FBN50B26D28	26	28	8×3.3	8	140.0	131.703	73	28	8	1.50
FBN50B26D30	26	30	8×3.3	8	140.0	131.703	73	28	8	1.50
FBN50B26D32	26	32	10×3.3	8	140.0	131.703	73	28	8	1.50
FBN50B26D35	26	35	10×3.3	8	140.0	131.703	73	28	8	1.50
FBN50B26D38	26	38	10×3.3	8	140.0	131.703	73	28	8	1.50
FBN50B26D40	26	40	12×3.3	8	140.0	131.703	73	28	8	1.50
FBN50B26D45	26	45	14×3.8	10	140.0	131.703	73	28	8	1.50
FBN50B27D24	27	24	8×3.3	8	145.0	136.744	73	28	8	1.50
FBN50B27D25	27	25	8×3.3	8	145.0	136.744	73	28	8	1.50
FBN50B27D28	27	28	8×3.3	8	145.0	136.744	73	28	8	1.50
FBN50B27D30	27	30	8×3.3	8	145.0	136.744	73	28	8	1.50
FBN50B27D32	27	32	10×3.3	8	145.0	136.744	73	28	8	1.50
FBN50B27D35	27	35	10×3.3	8	145.0	136.744	73	28	8	1.50
FBN50B27D38	27	38	10×3.3	8	145.0	136.744	73	28	8	1.50
FBN50B27D40	27	40	12×3.3	8	145.0	136.744	73	28	8	1.50
FBN50B27D45	27	45	14×3.8	10	145.0	136.744	73	28	8	1.50
FBN50B28D20	28	20	6×2.8	6	150.0	141.786	73	28	8	1.60
FBN50B28D24	28	24	8×3.3	8	150.0	141.786	73	28	8	1.60
FBN50B28D25	28	25	8×3.3	8	150.0	141.786	73	28	8	1.60
FBN50B28D28	28	28	8×3.3	8	150.0	141.786	73	28	8	1.60
FBN50B28D30	28	30	8×3.3	8	150.0	141.786	73	28	8	1.60
FBN50B28D32	28	32	10×3.3	8	150.0	141.786	73	28	8	1.60
FBN50B28D35	28	35	10×3.3	8	150.0	141.786	73	28	8	1.60
FBN50B28D38	28	38	10×3.3	8	150.0	141.786	73	28	8	1.60
FBN50B28D40	28	40	12×3.3	8	150.0	141.786	73	28	8	1.60

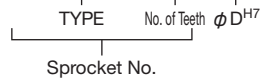
*M is a set screw. * The seal set screws differ from the usual due to the boss type.

FBN50B

FBN Finished Bore Sprocket New JIS Keyway Specification

Order Product Code

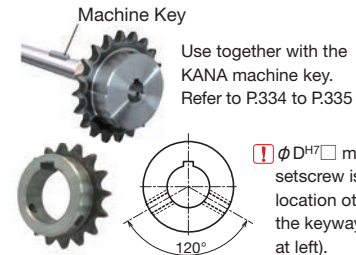
FBN50B20D22



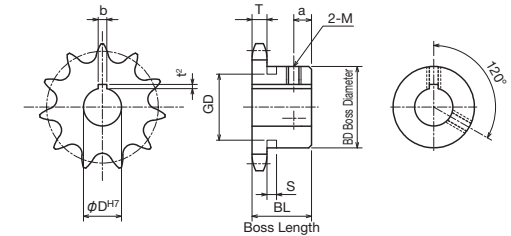
- Chain **No.50**
- Chain Pitch **(P) 15.875 mm**
- Roller Link Inner Width ... **(W) 9.53 mm**
- Roller Outside Diameter ... **(Dr) 10.16 mm**
- Tooth Width **(T) 8.7 mm**

TYPE	FBN50B										
Product Code	No. of Teeth	ϕ D ^{H7}	Keyway b×t ²	M	Do	Dp	BD	BL	a	Weight kg	
FBN50B28D42	28	42	12×3.3	8	150.0	141.786	73	28	8	1.60	
FBN50B28D45	28	45	14×3.8	10	150.0	141.786	73	28	8	1.60	
FBN50B29D24	29	24	8×3.3	8	155.0	146.829	73	28	8	1.70	
FBN50B29D30	29	30	8×3.3	8	155.0	146.829	73	28	8	1.70	
FBN50B30D22	30	22	6×2.8	6	161.0	151.873	73	28	8	1.80	
FBN50B30D25	30	25	8×3.3	8	161.0	151.873	73	28	8	1.80	
FBN50B30D28	30	28	8×3.3	8	161.0	151.873	73	28	8	1.80	
FBN50B30D30	30	30	8×3.3	8	161.0	151.873	73	28	8	1.80	
FBN50B30D32	30	32	10×3.3	8	161.0	151.873	73	28	8	1.80	
FBN50B30D35	30	35	10×3.3	8	161.0	151.873	73	28	8	1.80	
FBN50B30D38	30	38	10×3.3	8	161.0	151.873	73	28	8	1.80	
FBN50B30D40	30	40	12×3.3	8	161.0	151.873	73	28	8	1.80	
FBN50B30D45	30	45	14×3.8	10	161.0	151.873	73	28	8	1.80	
FBN50B32D25	32	25	8×3.3	8	171.0	161.961	73	28	8	1.90	
FBN50B32D28	32	28	8×3.3	8	171.0	161.961	73	28	8	1.90	
FBN50B32D30	32	30	8×3.3	8	171.0	161.961	73	28	8	1.90	
FBN50B32D32	32	32	10×3.3	8	171.0	161.961	73	28	8	1.90	
FBN50B32D35	32	35	10×3.3	8	171.0	161.961	73	28	8	1.90	
FBN50B32D38	32	38	10×3.3	8	171.0	161.961	73	28	8	1.90	
FBN50B32D40	32	40	12×3.3	8	171.0	161.961	73	28	8	1.90	
FBN50B32D45	32	45	14×3.8	10	171.0	161.961	73	28	8	1.90	
FBN50B33D35	33	35	10×3.3	8	176.0	167.007	73	28	8	2.00	
FBN50B33D40	33	40	12×3.3	8	176.0	167.007	73	28	8	2.00	
FBN50B34D25	34	25	8×3.3	8	181.0	172.052	73	28	8	2.10	
FBN50B34D28	34	28	8×3.3	8	181.0	172.052	73	28	8	2.10	
FBN50B34D30	34	30	8×3.3	8	181.0	172.052	73	28	8	2.10	
FBN50B34D32	34	32	10×3.3	8	181.0	172.052	73	28	8	2.10	
FBN50B34D35	34	35	10×3.3	8	181.0	172.052	73	28	8	2.10	
FBN50B34D38	34	38	10×3.3	8	181.0	172.052	73	28	8	2.10	
FBN50B34D40	34	40	12×3.3	8	181.0	172.052	73	28	8	2.10	
FBN50B34D45	34	45	14×3.8	10	181.0	172.052	73	28	8	2.10	
FBN50B35D25	35	25	8×3.3	8	186.0	177.099	73	28	8	2.20	
FBN50B35D28	35	28	8×3.3	8	186.0	177.099	73	28	8	2.20	

*M is a set screw. * The seal set screws differ from the usual due to the boss type.



! ϕ D^{H7} mark setscrew is set at a location other than the keyway (figure at left).



TYPE	FBN50B										
Product Code	No. of Teeth	ϕ D ^{H7}	Keyway b×t ²	M	Do	Dp	BD	BL	a	Weight kg	
FBN50B35D30	35	30	8×3.3	8	186.0	177.099	73	28	8	2.20	
FBN50B35D32	35	32	10×3.3	8	186.0	177.099	73	28	8	2.20	
FBN50B35D35	35	35	10×3.3	8	186.0	177.099	73	28	8	2.20	
FBN50B35D38	35	38	10×3.3	8	186.0	177.099	73	28	8	2.20	
FBN50B35D40	35	40	12×3.3	8	186.0	177.099	73	28	8	2.20	
FBN50B35D45	35	45	14×3.8	10	186.0	177.099	73	28	8	2.20	
FBN50B36D40	36	40	12×3.3	8	191.0	182.145	83	35	8	2.85	
FBN50B40D30	40	30	8×3.3	8	211.0	202.335	83	35	10	3.25	
FBN50B40D32	40	32	10×3.3	8	211.0	202.335	83	35	10	3.25	
FBN50B40D35	40	35	10×3.3	8	211.0	202.335	83	35	10	3.25	
FBN50B40D40	40	40	12×3.3	8	211.0	202.335	83	35	10	3.25	
FBN50B40D45	40	45	14×3.8	10	211.0	202.335	83	35	10	3.25	
FBN50B40D50	40	50	14×3.8	10	211.0	202.335	83	35	10	3.25	
FBN50B42D32	42	32	10×3.3	8	221.0	212.431	83	35	10	3.50	
FBN50B42D35	42	35	10×3.3	8	221.0	212.431	83	35	10	3.50	
FBN50B42D40	42	40	12×3.3	8	221.0	212.431	83	35	10	3.50	
FBN50B42D45	42	45	14×3.8	10	221.0	212.431	83	35	10	3.50	
FBN50B42D50	42	50	14×3.8	10	221.0	212.431	83	35	10	3.50	
FBN50B45D32	45	32	10×3.3	8	237.0	227.577	83	35	10	3.85	
FBN50B45D35	45	35	10×3.3	8	237.0	227.577	83	35	10	3.85	
FBN50B45D40	45	40	12×3.3	8	237.0	227.577	83	35	10	3.85	
FBN50B45D45	45	45	14×3.8	10	237.0	227.577	83	35	10	3.85	
FBN50B45D50	45	50	14×3.8	10	237.0	227.577	83	35	10	3.85	
FBN50B48D32	48	32	10×3.3	8	252.0	242.725	83	35	10	4.20	
FBN50B48D35	48	35	10×3.3	8	252.0	242.725	83	35	10	4.20	
FBN50B48D40	48	40	12×3.3	8	252.0	242.725	83	35	10	4.20	
FBN50B48D45	48	45	14×3.8	10	252.0	242.725	83	35	10	4.20	
FBN50B48D50	48	50	14×3.8	10	252.0	242.725	83	35	10	4.20	
FBN50B50D30	50	30	8×3.3	8	262.0	252.825	83	35	10	4.50	
FBN50B50D32	50	32	10×3.3	8	262.0	252.825	83	35	10	4.50	
FBN50B50D35	50	35	10×3.3	8	262.0	252.825	83	35	10	4.50	
FBN50B50D40	50	40	12×3.3	8	262.0	252.825	83	35	10	4.50	
FBN50B50D45	50	45	14×3.8	10	262.0	252.825	83	35	10	4.50	
FBN50B50D50	50	50	14×3.8	10	262.0	252.825	83	35	10	4.50	

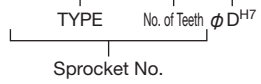
*M is a set screw. * The seal set screws differ from the usual due to the boss type.

FBN60B

FBN Finished Bore Sprocket New JIS Keyway Specification

Order Product Code

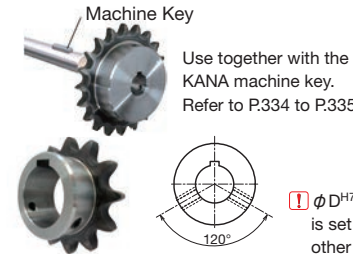
FBN60B20D20



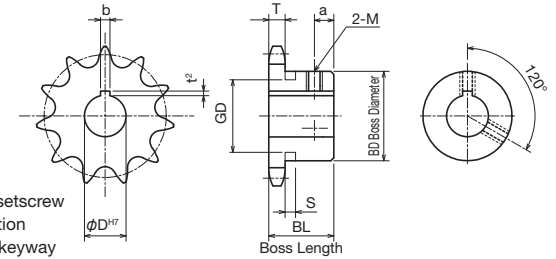
- Chain No.60
- Chain Pitch (P) 19.05 mm
- Roller Link Inner Width (W) 12.70 mm
- Roller Outside Diameter (Dr) 11.91 mm
- Tooth Width (T) 11.7 mm

ⓘ Sprockets with a ★ symbol for BD have a channel in the boss exterior.

No. of Teeth	S	GD
9		32
10	8.0	37
11		45



ⓘ φD^{H7}□ mark setscrew is set at a location other than the keyway (figure at left).



m Carbon Structural Steel
h High-frequency Hardened Teeth

TYPE	FBN60B										
Product Code	No. of Teeth	φD ^{H7}	Keyway b×t ²	M	Do	Dp	BD	BL	a	Weight kg	
FBN60B9D19	9	19	6×2.8	6	63.0	55.698	★43	32	6	0.40	
FBN60B9D20	9	20	6×2.8	6	63.0	55.698	★43	32	6	0.40	
FBN60B9D22	9	22	6×2.8	6	63.0	55.698	★43	32	6	0.40	
FBN60B9D24	9	24	8×3.3	8	63.0	55.698	★43	32	6	0.40	
FBN60B10D19	10	19	6×2.8	6	68.0	61.647	★49	32	6	0.49	
FBN60B10D20	10	20	6×2.8	6	68.0	61.647	★49	32	6	0.49	
FBN60B10D22	10	22	6×2.8	6	68.0	61.647	★49	32	6	0.49	
FBN60B10D24	10	24	8×3.3	8	68.0	61.647	★49	32	6	0.49	
FBN60B10D25	10	25	8×3.3	8	68.0	61.647	★49	32	6	0.49	
FBN60B10D28	10	28	8×3.3	8	68.0	61.647	★49	32	6	0.49	
FBN60B10D30	10	30	8×3.3	8	68.0	61.647	★49	32	6	0.49	
FBN60B11D19	11	19	6×2.8	6	76.0	67.617	★51	32	6	0.60	
FBN60B11D20	11	20	6×2.8	6	76.0	67.617	★51	32	6	0.60	
FBN60B11D22	11	22	6×2.8	6	76.0	67.617	★51	32	6	0.60	
FBN60B11D24	11	24	8×3.3	8	76.0	67.617	★51	32	6	0.60	
FBN60B11D25	11	25	8×3.3	8	76.0	67.617	★51	32	6	0.60	
FBN60B11D28	11	28	8×3.3	8	76.0	67.617	★51	32	6	0.60	
FBN60B11D30	11	30	8×3.3	8	76.0	67.617	★51	32	6	0.60	
FBN60B11D32	11	32	10×3.3	8	76.0	67.617	★51	32	6	0.60	
FBN60B12D18	12	18	6×2.8	6	83.0	73.604	51	32	8	0.69	
FBN60B12D19	12	19	6×2.8	6	83.0	73.604	51	32	8	0.69	
FBN60B12D20	12	20	6×2.8	6	83.0	73.604	51	32	8	0.69	
FBN60B12D22	12	22	6×2.8	6	83.0	73.604	51	32	8	0.69	
FBN60B12D24	12	24	8×3.3	8	83.0	73.604	51	32	8	0.69	
FBN60B12D25	12	25	8×3.3	8	83.0	73.604	51	32	8	0.69	
FBN60B12D28	12	28	8×3.3	8	83.0	73.604	51	32	8	0.69	
FBN60B12D30	12	30	8×3.3	8	83.0	73.604	51	32	8	0.69	
FBN60B12D32	12	32	10×3.3	8	83.0	73.604	51	32	8	0.69	
FBN60B12D35	12	35	10×3.3	*6	83.0	73.604	51	32	8	0.69	
FBN60B13D19	13	19	6×2.8	6	89.0	79.602	57	32	8	0.81	
FBN60B13D20	13	20	6×2.8	6	89.0	79.602	57	32	8	0.81	
FBN60B13D22	13	22	6×2.8	6	89.0	79.602	57	32	8	0.81	
FBN60B13D24	13	24	8×3.3	8	89.0	79.602	57	32	8	0.81	
FBN60B13D25	13	25	8×3.3	8	89.0	79.602	57	32	8	0.81	
FBN60B13D28	13	28	8×3.3	8	89.0	79.602	57	32	8	0.81	
FBN60B13D30	13	30	8×3.3	8	89.0	79.602	57	32	8	0.81	
FBN60B13D32	13	32	10×3.3	8	89.0	79.602	57	32	8	0.81	
FBN60B13D35	13	35	10×3.3	8	89.0	79.602	57	32	8	0.81	
FBN60B13D38	13	38	10×3.3	8	89.0	79.602	57	32	8	0.81	

*M is a set screw. * The seal set screws differ from the usual due to the boss type.

TYPE	FBN60B										
Product Code	No. of Teeth	φD ^{H7}	Keyway b×t ²	M	Do	Dp	BD	BL	a	Weight kg	
FBN60B13D40	13	40	12×3.3	8	89.0	79.602	57	32	8	0.81	
FBN60B14D17	14	17	5×2.3	6	95.0	85.610	62	32	8	0.96	
FBN60B14D19	14	19	6×2.8	6	95.0	85.610	62	32	8	0.96	
FBN60B14D20	14	20	6×2.8	6	95.0	85.610	62	32	8	0.96	
FBN60B14D22	14	22	6×2.8	6	95.0	85.610	62	32	8	0.96	
FBN60B14D24	14	24	8×3.3	8	95.0	85.610	62	32	8	0.96	
FBN60B14D25	14	25	8×3.3	8	95.0	85.610	62	32	8	0.96	
FBN60B14D28	14	28	8×3.3	8	95.0	85.610	62	32	8	0.96	
FBN60B14D30	14	30	8×3.3	8	95.0	85.610	62	32	8	0.96	
FBN60B14D32	14	32	10×3.3	8	95.0	85.610	62	32	8	0.96	
FBN60B14D35	14	35	10×3.3	8	95.0	85.610	62	32	8	0.96	
FBN60B14D38	14	38	10×3.3	8	95.0	85.610	62	32	8	0.96	
FBN60B14D40	14	40	12×3.3	8	95.0	85.610	62	32	8	0.96	
FBN60B15D18	15	18	6×2.8	6	101.0	91.625	68	32	8	1.10	
FBN60B15D19	15	19	6×2.8	6	101.0	91.625	68	32	8	1.10	
FBN60B15D20	15	20	6×2.8	6	101.0	91.625	68	32	8	1.10	
FBN60B15D22	15	22	6×2.8	6	101.0	91.625	68	32	8	1.10	
FBN60B15D24	15	24	8×3.3	8	101.0	91.625	68	32	8	1.10	
FBN60B15D25	15	25	8×3.3	8	101.0	91.625	68	32	8	1.10	
FBN60B15D28	15	28	8×3.3	8	101.0	91.625	68	32	8	1.10	
FBN60B15D30	15	30	8×3.3	8	101.0	91.625	68	32	8	1.10	
FBN60B15D32	15	32	10×3.3	8	101.0	91.625	68	32	8	1.10	
FBN60B15D35	15	35	10×3.3	8	101.0	91.625	68	32	8	1.10	
FBN60B15D38	15	38	10×3.3	8	101.0	91.625	68	32	8	1.10	
FBN60B15D40	15	40	12×3.3	8	101.0	91.625	68	32	8	1.10	
FBN60B15D42	15	42	12×3.3	8	101.0	91.625	68	32	8	1.10	
FBN60B15D45	15	45	14×3.8	10	101.0	91.625	68	32	8	1.10	
FBN60B16D19	16	19	6×2.8	6	107.0	97.647	73	32	8	1.30	
FBN60B16D20	16	20	6×2.8	6	107.0	97.647	73	32	8	1.30	
FBN60B16D22	16	22	6×2.8	6	107.0	97.647	73	32	8	1.30	
FBN60B16D24	16	24	8×3.3	8	107.0	97.647	73	32	8	1.30	
FBN60B16D25	16	25	8×3.3	8	107.0	97.647	73	32	8	1.30	
FBN60B16D28	16	28	8×3.3	8	107.0	97.647	73	32	8	1.30	
FBN60B16D30	16	30	8×3.3	8	107.0	97.647	73	32	8	1.30	
FBN60B16D32	16	32	10×3.3	8	107.0	97.647	73	32	8	1.30	
FBN60B16D35	16	35	10×3.3	8	107.0	97.647	73	32	8	1.30	
FBN60B16D38	16	38	10×3.3	8	107.0	97.647	73	32	8	1.30	
FBN60B16D40	16	40	12×3.3	8	107.0	97.647	73	32	8	1.30	
FBN60B16D42	16	42	12×3.3	8	107.0	97.647	73	32	8	1.30	

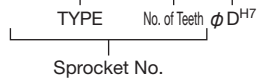
*M is a set screw. * The seal set screws differ from the usual due to the boss type.

FBN60B

FBN Finished Bore Sprocket New JIS Keyway Specification

Order Product Code

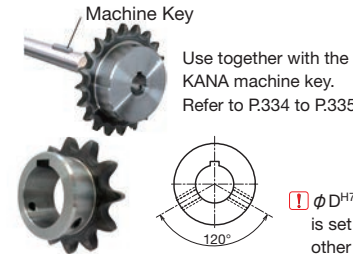
FBN60B20D20



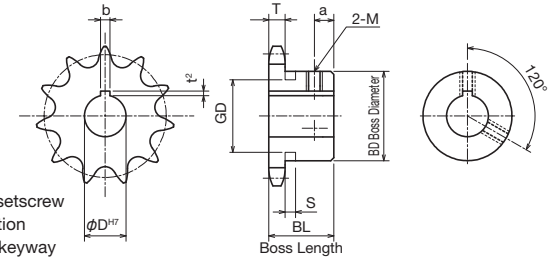
- Chain No.60
- Chain Pitch (P) 19.05 mm
- Roller Link Inner Width (W) 12.70 mm
- Roller Outside Diameter (Dr) 11.91 mm
- Tooth Width (T) 11.7 mm

ⓘ Sprockets with a ★ symbol for BD have a channel in the boss exterior.

No. of Teeth	S	GD
9		32
10	8.0	37
11		45



ⓘ φ D^{H7} □ mark setscrew is set at a location other than the keyway (figure at left).



- m** Carbon Structural Steel
- h** High-frequency Hardened Teeth

TYPE	FBN60B										
Product Code	No. of Teeth	φ D ^{H7}	Keyway b×t ²	M	Do	Dp	BD	BL	a	Weight kg	
FBN60B16D45	16	45	14×3.8	10	107.0	97.647	73	32	8	1.30	
FBN60B16D48	16	48	14×3.8	10	107.0	97.647	73	32	8	1.30	
FBN60B16D50	16	50	14×3.8	10	107.0	97.647	73	32	8	1.30	
FBN60B17D19	17	19	6×2.8	6	113.0	103.674	73	32	8	1.40	
FBN60B17D20	17	20	6×2.8	6	113.0	103.674	73	32	8	1.40	
FBN60B17D22	17	22	6×2.8	6	113.0	103.674	73	32	8	1.40	
FBN60B17D24	17	24	8×3.3	8	113.0	103.674	73	32	8	1.40	
FBN60B17D25	17	25	8×3.3	8	113.0	103.674	73	32	8	1.40	
FBN60B17D28	17	28	8×3.3	8	113.0	103.674	73	32	8	1.40	
FBN60B17D30	17	30	8×3.3	8	113.0	103.674	73	32	8	1.40	
FBN60B17D32	17	32	10×3.3	8	113.0	103.674	73	32	8	1.40	
FBN60B17D35	17	35	10×3.3	8	113.0	103.674	73	32	8	1.40	
FBN60B17D38	17	38	10×3.3	8	113.0	103.674	73	32	8	1.40	
FBN60B17D40	17	40	12×3.3	8	113.0	103.674	73	32	8	1.40	
FBN60B17D42	17	42	12×3.3	8	113.0	103.674	73	32	8	1.40	
FBN60B17D45	17	45	14×3.8	10	113.0	103.674	73	32	8	1.40	
FBN60B17D48	17	48	14×3.8	10	113.0	103.674	73	32	8	1.40	
FBN60B17D50	17	50	14×3.8	10	113.0	103.674	73	32	8	1.40	
FBN60B18D19	18	19	6×2.8	6	119.0	109.705	83	40	12	2.00	
FBN60B18D20	18	20	6×2.8	6	119.0	109.705	83	40	12	2.00	
FBN60B18D22	18	22	6×2.8	6	119.0	109.705	83	40	12	2.00	
FBN60B18D24	18	24	8×3.3	8	119.0	109.705	83	40	12	2.00	
FBN60B18D25	18	25	8×3.3	8	119.0	109.705	83	40	12	2.00	
FBN60B18D28	18	28	8×3.3	8	119.0	109.705	83	40	12	2.00	
FBN60B18D30	18	30	8×3.3	8	119.0	109.705	83	40	12	2.00	
FBN60B18D32	18	32	10×3.3	8	119.0	109.705	83	40	12	2.00	
FBN60B18D35	18	35	10×3.3	8	119.0	109.705	83	40	12	2.00	
FBN60B18D38	18	38	10×3.3	8	119.0	109.705	83	40	12	2.00	
FBN60B18D40	18	40	12×3.3	8	119.0	109.705	83	40	12	2.00	
FBN60B18D42	18	42	12×3.3	8	119.0	109.705	83	40	12	2.00	
FBN60B18D45	18	45	14×3.8	10	119.0	109.705	83	40	12	2.00	
FBN60B18D48	18	48	14×3.8	10	119.0	109.705	83	40	12	2.00	
FBN60B18D50	18	50	14×3.8	10	119.0	109.705	83	40	12	2.00	
FBN60B18D55	18	55	16×4.3	12	119.0	109.705	83	40	12	2.00	
FBN60B19D19	19	19	6×2.8	6	126.0	115.739	83	40	12	2.10	
FBN60B19D20	19	20	6×2.8	6	126.0	115.739	83	40	12	2.10	
FBN60B19D22	19	22	6×2.8	6	126.0	115.739	83	40	12	2.10	
FBN60B19D24	19	24	8×3.3	8	126.0	115.739	83	40	12	2.10	
FBN60B19D25	19	25	8×3.3	8	126.0	115.739	83	40	12	2.10	

*M is a set screw. * The seal set screws differ from the usual due to the boss type.

TYPE	FBN60B										
Product Code	No. of Teeth	φ D ^{H7}	Keyway b×t ²	M	Do	Dp	BD	BL	a	Weight kg	
FBN60B19D28	19	28	8×3.3	8	126.0	115.739	83	40	12	2.10	
FBN60B19D30	19	30	8×3.3	8	126.0	115.739	83	40	12	2.10	
FBN60B19D32	19	32	10×3.3	8	126.0	115.739	83	40	12	2.10	
FBN60B19D35	19	35	10×3.3	8	126.0	115.739	83	40	12	2.10	
FBN60B19D38	19	38	10×3.3	8	126.0	115.739	83	40	12	2.10	
FBN60B19D40	19	40	12×3.3	8	126.0	115.739	83	40	12	2.10	
FBN60B19D42	19	42	12×3.3	8	126.0	115.739	83	40	12	2.10	
FBN60B19D45	19	45	14×3.8	10	126.0	115.739	83	40	12	2.10	
FBN60B19D48	19	48	14×3.8	10	126.0	115.739	83	40	12	2.10	
FBN60B19D50	19	50	14×3.8	10	126.0	115.739	83	40	12	2.10	
FBN60B19D55	19	55	16×4.3	12	126.0	115.739	83	40	12	2.10	
FBN60B20D19	20	19	6×2.8	6	132.0	121.776	83	40	12	2.20	
FBN60B20D20	20	20	6×2.8	6	132.0	121.776	83	40	12	2.20	
FBN60B20D22	20	22	6×2.8	6	132.0	121.776	83	40	12	2.20	
FBN60B20D24	20	24	8×3.3	8	132.0	121.776	83	40	12	2.20	
FBN60B20D25	20	25	8×3.3	8	132.0	121.776	83	40	12	2.20	
FBN60B20D28	20	28	8×3.3	8	132.0	121.776	83	40	12	2.20	
FBN60B20D30	20	30	8×3.3	8	132.0	121.776	83	40	12	2.20	
FBN60B20D32	20	32	10×3.3	8	132.0	121.776	83	40	12	2.20	
FBN60B20D35	20	35	10×3.3	8	132.0	121.776	83	40	12	2.20	
FBN60B20D38	20	38	10×3.3	8	132.0	121.776	83	40	12	2.20	
FBN60B20D40	20	40	12×3.3	8	132.0	121.776	83	40	12	2.20	
FBN60B20D42	20	42	12×3.3	8	132.0	121.776	83	40	12	2.20	
FBN60B20D45	20	45	14×3.8	10	132.0	121.776	83	40	12	2.20	
FBN60B20D48	20	48	14×3.8	10	132.0	121.776	83	40	12	2.20	
FBN60B20D50	20	50	14×3.8	10	132.0	121.776	83	40	12	2.20	
FBN60B20D55	20	55	16×4.3	12	132.0	121.776	83	40	12	2.20	
FBN60B21D20	21	20	6×2.8	6	138.0	127.816	83	40	12	2.30	
FBN60B21D22	21	22	6×2.8	6	138.0	127.816	83	40	12	2.30	
FBN60B21D24	21	24	8×3.3	8	138.0	127.816	83	40	12	2.30	
FBN60B21D25	21	25	8×3.3	8	138.0	127.816	83	40	12	2.30	
FBN60B21D28	21	28	8×3.3	8	138.0	127.816	83	40	12	2.30	
FBN60B21D30	21	30	8×3.3	8	138.0	127.816	83	40	12	2.30	
FBN60B21D32	21	32	10×3.3	8	138.0	127.816	83	40	12	2.30	
FBN60B21D35	21	35	10×3.3	8	138.0	127.816	83	40	12	2.30	
FBN60B21D38	21	38	10×3.3	8	138.0	127.816	83	40	12	2.30	
FBN60B21D40	21	40	12×3.3	8	138.0	127.816	83	40	12	2.30	
FBN60B21D42	21	42	12×3.3	8	138.0	127.816	83	40	12	2.30	
FBN60B21D45	21	45	14×3.8	10	138.0	127.816	83	40	12	2.30	

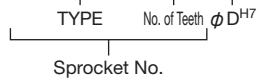
*M is a set screw. * The seal set screws differ from the usual due to the boss type.

FBN60B

FBN Finished Bore Sprocket New JIS Keyway Specification

Order Product Code

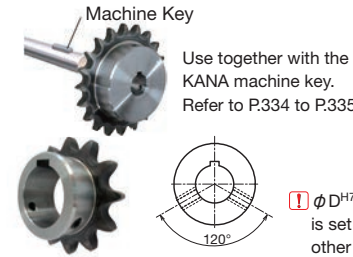
FBN60B20D20



- Chain No.60
- Chain Pitch (P) 19.05 mm
- Roller Link Inner Width (W) 12.70 mm
- Roller Outside Diameter (Dr) 11.91 mm
- Tooth Width (T) 11.7 mm

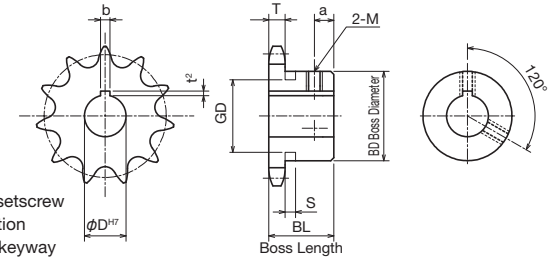
ⓘ Sprockets with a ★ symbol for BD have a channel in the boss exterior.

No. of Teeth	S	GD
9		32
10	8.0	37
11		45



Use together with the KANA machine key. Refer to P.334 to P.335

ⓘ φ D^{H7} □ mark setscrew is set at a location other than the keyway (figure at left).



TYPE FBN60B m Carbon Structural Steel
h High-frequency Hardened Teeth

Product Code	No. of Teeth	φ D ^{H7}	Keyway b×t ²	M	Do	Dp	BD	BL	a	Weight kg
FBN60B21D48	21	48	14×3.8	10	138.0	127.816	83	40	12	2.30
FBN60B21D50	21	50	14×3.8	10	138.0	127.816	83	40	12	2.30
FBN60B21D55	21	55	16×4.3	12	138.0	127.816	83	40	12	2.30
FBN60B22D20	22	20	6×2.8	6	144.0	133.858	83	40	12	2.50
FBN60B22D22	22	22	6×2.8	6	144.0	133.858	83	40	12	2.50
FBN60B22D24	22	24	8×3.3	8	144.0	133.858	83	40	12	2.50
FBN60B22D25	22	25	8×3.3	8	144.0	133.858	83	40	12	2.50
FBN60B22D28	22	28	8×3.3	8	144.0	133.858	83	40	12	2.50
FBN60B22D30	22	30	8×3.3	8	144.0	133.858	83	40	12	2.50
FBN60B22D32	22	32	10×3.3	8	144.0	133.858	83	40	12	2.50
FBN60B22D35	22	35	10×3.3	8	144.0	133.858	83	40	12	2.50
FBN60B22D38	22	38	10×3.3	8	144.0	133.858	83	40	12	2.50
FBN60B22D40	22	40	12×3.3	8	144.0	133.858	83	40	12	2.50
FBN60B22D42	22	42	12×3.3	8	144.0	133.858	83	40	12	2.50
FBN60B22D45	22	45	14×3.8	10	144.0	133.858	83	40	12	2.50
FBN60B22D48	22	48	14×3.8	10	144.0	133.858	83	40	12	2.50
FBN60B22D50	22	50	14×3.8	10	144.0	133.858	83	40	12	2.50
FBN60B22D55	22	55	16×4.3	12	144.0	133.858	83	40	12	2.50
FBN60B23D20	23	20	6×2.8	6	150.0	139.902	83	40	12	2.50
FBN60B23D22	23	22	6×2.8	6	150.0	139.902	83	40	12	2.50
FBN60B23D24	23	24	8×3.3	8	150.0	139.902	83	40	12	2.50
FBN60B23D25	23	25	8×3.3	8	150.0	139.902	83	40	12	2.50
FBN60B23D28	23	28	8×3.3	8	150.0	139.902	83	40	12	2.50
FBN60B23D30	23	30	8×3.3	8	150.0	139.902	83	40	12	2.50
FBN60B23D32	23	32	10×3.3	8	150.0	139.902	83	40	12	2.50
FBN60B23D35	23	35	10×3.3	8	150.0	139.902	83	40	12	2.50
FBN60B23D38	23	38	10×3.3	8	150.0	139.902	83	40	12	2.50
FBN60B23D40	23	40	12×3.3	8	150.0	139.902	83	40	12	2.50
FBN60B23D42	23	42	12×3.3	8	150.0	139.902	83	40	12	2.50
FBN60B23D45	23	45	14×3.8	10	150.0	139.902	83	40	12	2.50
FBN60B23D48	23	48	14×3.8	10	150.0	139.902	83	40	12	2.50
FBN60B23D50	23	50	14×3.8	10	150.0	139.902	83	40	12	2.50
FBN60B23D55	23	55	16×4.3	12	150.0	139.902	83	40	12	2.50
FBN60B24D20	24	20	6×2.8	6	156.0	145.948	83	40	12	2.60
FBN60B24D22	24	22	6×2.8	6	156.0	145.948	83	40	12	2.60
FBN60B24D24	24	24	8×3.3	8	156.0	145.948	83	40	12	2.60
FBN60B24D25	24	25	8×3.3	8	156.0	145.948	83	40	12	2.60
FBN60B24D28	24	28	8×3.3	8	156.0	145.948	83	40	12	2.60
FBN60B24D30	24	30	8×3.3	8	156.0	145.948	83	40	12	2.60

*M is a set screw. * The seal set screws differ from the usual due to the boss type.

TYPE FBN60B m Carbon Structural Steel
h High-frequency Hardened Teeth

Product Code	No. of Teeth	φ D ^{H7}	Keyway b×t ²	M	Do	Dp	BD	BL	a	Weight kg
FBN60B24D32	24	32	10×3.3	8	156.0	145.948	83	40	12	2.60
FBN60B24D35	24	35	10×3.3	8	156.0	145.948	83	40	12	2.60
FBN60B24D38	24	38	10×3.3	8	156.0	145.948	83	40	12	2.60
FBN60B24D40	24	40	12×3.3	8	156.0	145.948	83	40	12	2.60
FBN60B24D42	24	42	12×3.3	8	156.0	145.948	83	40	12	2.60
FBN60B24D45	24	45	14×3.8	10	156.0	145.948	83	40	12	2.60
FBN60B24D48	24	48	14×3.8	10	156.0	145.948	83	40	12	2.60
FBN60B24D50	24	50	14×3.8	10	156.0	145.948	83	40	12	2.60
FBN60B24D55	24	55	16×4.3	12	156.0	145.948	83	40	12	2.60
FBN60B25D20	25	20	6×2.8	6	162.0	151.995	83	40	12	2.70
FBN60B25D22	25	22	6×2.8	6	162.0	151.995	83	40	12	2.70
FBN60B25D24	25	24	8×3.3	8	162.0	151.995	83	40	12	2.70
FBN60B25D25	25	25	8×3.3	8	162.0	151.995	83	40	12	2.70
FBN60B25D28	25	28	8×3.3	8	162.0	151.995	83	40	12	2.70
FBN60B25D30	25	30	8×3.3	8	162.0	151.995	83	40	12	2.70
FBN60B25D32	25	32	10×3.3	8	162.0	151.995	83	40	12	2.70
FBN60B25D35	25	35	10×3.3	8	162.0	151.995	83	40	12	2.70
FBN60B25D38	25	38	10×3.3	8	162.0	151.995	83	40	12	2.70
FBN60B25D40	25	40	12×3.3	8	162.0	151.995	83	40	12	2.70
FBN60B25D42	25	42	12×3.3	8	162.0	151.995	83	40	12	2.70
FBN60B25D45	25	45	14×3.8	10	162.0	151.995	83	40	12	2.70
FBN60B25D48	25	48	14×3.8	10	162.0	151.995	83	40	12	2.70
FBN60B25D50	25	50	14×3.8	10	162.0	151.995	83	40	12	2.70
FBN60B25D55	25	55	16×4.3	12	162.0	151.995	83	40	12	2.70
FBN60B26D20	26	20	6×2.8	6	168.0	158.043	83	40	12	2.90
FBN60B26D22	26	22	6×2.8	6	168.0	158.043	83	40	12	2.90
FBN60B26D24	26	24	8×3.3	8	168.0	158.043	83	40	12	2.90
FBN60B26D25	26	25	8×3.3	8	168.0	158.043	83	40	12	2.90
FBN60B26D28	26	28	8×3.3	8	168.0	158.043	83	40	12	2.90
FBN60B26D30	26	30	8×3.3	8	168.0	158.043	83	40	12	2.90
FBN60B26D32	26	32	10×3.3	8	168.0	158.043	83	40	12	2.90
FBN60B26D35	26	35	10×3.3	8	168.0	158.043	83	40	12	2.90
FBN60B26D38	26	38	10×3.3	8	168.0	158.043	83	40	12	2.90
FBN60B26D40	26	40	12×3.3	8	168.0	158.043	83	40	12	2.90
FBN60B26D42	26	42	12×3.3	8	168.0	158.043	83	40	12	2.90
FBN60B26D45	26	45	14×3.8	10	168.0	158.043	83	40	12	2.90
FBN60B26D48	26	48	14×3.8	10	168.0	158.043	83	40	12	2.90
FBN60B26D50	26	50	14×3.8	10	168.0	158.043	83	40	12	2.90
FBN60B26D55	26	55	16×4.3	12	168.0	158.043	83	40	12	2.90

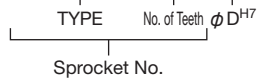
*M is a set screw. * The seal set screws differ from the usual due to the boss type.

FBN60B

FBN Finished Bore Sprocket New JIS Keyway Specification

Order Product Code

FBN60B20D20



ⓘ Sprockets with a ★ symbol for BD have a channel in the boss exterior.

No. of Teeth	S	GD
9		32
10	8.0	37
11		45

- Chain No.60
- Chain Pitch (P) 19.05 mm
- Roller Link Inner Width (W) 12.70 mm
- Roller Outside Diameter (Dr) 11.91 mm
- Tooth Width (T) 11.7 mm

- m** Carbon Structural Steel
- h** High-frequency Hardened Teeth

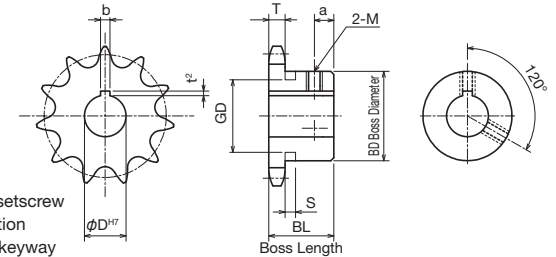
TYPE	FBN60B										
Product Code	No. of Teeth	ϕD^{H7}	Keyway b×t ²	M	Do	Dp	BD	BL	a	Weight kg	
FBN60B27D22	27	22	6×2.8	6	174.0	164.093	83	40	12	3.00	
FBN60B27D24	27	24	8×3.3	8	174.0	164.093	83	40	12	3.00	
FBN60B27D25	27	25	8×3.3	8	174.0	164.093	83	40	12	3.00	
FBN60B27D28	27	28	8×3.3	8	174.0	164.093	83	40	12	3.00	
FBN60B27D30	27	30	8×3.3	8	174.0	164.093	83	40	12	3.00	
FBN60B27D32	27	32	10×3.3	8	174.0	164.093	83	40	12	3.00	
FBN60B27D35	27	35	10×3.3	8	174.0	164.093	83	40	12	3.00	
FBN60B27D38	27	38	10×3.3	8	174.0	164.093	83	40	12	3.00	
FBN60B27D40	27	40	12×3.3	8	174.0	164.093	83	40	12	3.00	
FBN60B27D42	27	42	12×3.3	8	174.0	164.093	83	40	12	3.00	
FBN60B27D45	27	45	14×3.8	10	174.0	164.093	83	40	12	3.00	
FBN60B27D48	27	48	14×3.8	10	174.0	164.093	83	40	12	3.00	
FBN60B27D50	27	50	14×3.8	10	174.0	164.093	83	40	12	3.00	
FBN60B28D22	28	22	6×2.8	6	180.0	170.143	83	40	12	3.10	
FBN60B28D24	28	24	8×3.3	8	180.0	170.143	83	40	12	3.10	
FBN60B28D25	28	25	8×3.3	8	180.0	170.143	83	40	12	3.10	
FBN60B28D28	28	28	8×3.3	8	180.0	170.143	83	40	12	3.10	
FBN60B28D30	28	30	8×3.3	8	180.0	170.143	83	40	12	3.10	
FBN60B28D32	28	32	10×3.3	8	180.0	170.143	83	40	12	3.10	
FBN60B28D35	28	35	10×3.3	8	180.0	170.143	83	40	12	3.10	
FBN60B28D38	28	38	10×3.3	8	180.0	170.143	83	40	12	3.10	
FBN60B28D40	28	40	12×3.3	8	180.0	170.143	83	40	12	3.10	
FBN60B28D42	28	42	12×3.3	8	180.0	170.143	83	40	12	3.10	
FBN60B28D45	28	45	14×3.8	10	180.0	170.143	83	40	12	3.10	
FBN60B28D48	28	48	14×3.8	10	180.0	170.143	83	40	12	3.10	
FBN60B28D50	28	50	14×3.8	10	180.0	170.143	83	40	12	3.10	
FBN60B29D35	29	35	10×3.3	8	187.0	176.195	83	40	12	3.30	
FBN60B30D22	30	22	6×2.8	6	193.0	182.247	83	40	12	3.40	
FBN60B30D24	30	24	8×3.3	8	193.0	182.247	83	40	12	3.40	
FBN60B30D25	30	25	8×3.3	8	193.0	182.247	83	40	12	3.40	
FBN60B30D28	30	28	8×3.3	8	193.0	182.247	83	40	12	3.40	
FBN60B30D30	30	30	8×3.3	8	193.0	182.247	83	40	12	3.40	
FBN60B30D32	30	32	10×3.3	8	193.0	182.247	83	40	12	3.40	
FBN60B30D35	30	35	10×3.3	8	193.0	182.247	83	40	12	3.40	
FBN60B30D38	30	38	10×3.3	8	193.0	182.247	83	40	12	3.40	
FBN60B30D40	30	40	12×3.3	8	193.0	182.247	83	40	12	3.40	
FBN60B30D42	30	42	12×3.3	8	193.0	182.247	83	40	12	3.40	
FBN60B30D45	30	45	14×3.8	10	193.0	182.247	83	40	12	3.40	

*M is a set screw. * The seal set screws differ from the usual due to the boss type.



Use together with the KANA machine key. Refer to P.334 to P.335

ⓘ ϕD^{H7} mark setscrew is set at a location other than the keyway (figure at left).



TYPE	FBN60B										
Product Code	No. of Teeth	ϕD^{H7}	Keyway b×t ²	M	Do	Dp	BD	BL	a	Weight kg	
FBN60B30D48	30	48	14×3.8	10	193.0	182.247	83	40	12	3.40	
FBN60B30D50	30	50	14×3.8	10	193.0	182.247	83	40	12	3.40	
FBN60B30D55	30	55	16×4.3	12	193.0	182.247	83	40	12	3.40	
FBN60B31D40	31	40	12×3.3	8	199.0	188.300	83	40	12	3.64	
FBN60B32D30	32	30	8×3.3	8	205.0	194.354	83	40	12	3.80	
FBN60B32D32	32	32	10×3.3	8	205.0	194.354	83	40	12	3.80	
FBN60B32D35	32	35	10×3.3	8	205.0	194.354	83	40	12	3.80	
FBN60B32D40	32	40	12×3.3	8	205.0	194.354	83	40	12	3.80	
FBN60B32D45	32	45	14×3.8	10	205.0	194.354	83	40	12	3.80	
FBN60B32D50	32	50	14×3.8	10	205.0	194.354	83	40	12	3.80	
FBN60B32D55	32	55	16×4.3	12	205.0	194.354	83	40	12	3.80	
FBN60B33D35	33	35	10×3.3	8	211.0	200.408	83	40	12	4.00	
FBN60B34D50	34	50	14×3.8	10	217.0	206.463	83	40	12	4.15	
FBN60B35D30	35	30	8×3.3	8	223.0	212.518	83	40	12	4.33	
FBN60B35D32	35	32	10×3.3	8	223.0	212.518	83	40	12	4.33	
FBN60B35D35	35	35	10×3.3	8	223.0	212.518	83	40	12	4.33	
FBN60B35D40	35	40	12×3.3	8	223.0	212.518	83	40	12	4.33	
FBN60B35D45	35	45	14×3.8	10	223.0	212.518	83	40	12	4.33	
FBN60B35D50	35	50	14×3.8	10	223.0	212.518	83	40	12	4.33	
FBN60B35D55	35	55	16×4.3	12	223.0	212.518	83	40	12	4.33	
FBN60B38D32	38	32	10×3.3	8	241.0	230.687	83	40	12	4.90	
FBN60B38D35	38	35	10×3.3	8	241.0	230.687	83	40	12	4.90	
FBN60B38D40	38	40	12×3.3	8	241.0	230.687	83	40	12	4.90	
FBN60B38D45	38	45	14×3.8	10	241.0	230.687	83	40	12	4.90	
FBN60B38D50	38	50	14×3.8	10	241.0	230.687	83	40	12	4.90	
FBN60B38D55	38	55	16×4.3	12	241.0	230.687	83	40	12	4.90	
FBN60B40D32	40	32	10×3.3	8	253.0	242.802	83	40	12	5.30	
FBN60B40D35	40	35	10×3.3	8	253.0	242.802	83	40	12	5.30	
FBN60B40D40	40	40	12×3.3	8	253.0	242.802	83	40	12	5.30	
FBN60B40D45	40	45	14×3.8	10	253.0	242.802	83	40	12	5.30	
FBN60B40D50	40	50	14×3.8	10	253.0	242.802	83	40	12	5.30	
FBN60B40D55	40	55	16×4.3	12	253.0	242.802	83	40	12	5.30	
FBN60B45D32	45	32	10×3.3	8	284.0	273.093	93	45	12	7.10	
FBN60B45D35	45	35	10×3.3	8	284.0	273.093	93	45	12	7.10	
FBN60B45D40	45	40	12×3.3	8	284.0	273.093	93	45	12	7.10	
FBN60B45D45	45	45	14×3.8	10	284.0	273.093	93	45	12	7.10	
FBN60B45D50	45	50	14×3.8	10	284.0	273.093	93	45	12	7.10	
FBN60B45D55	45	55	16×4.3	12	284.0	273.093	93	45	12	7.10	

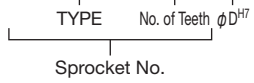
*M is a set screw. * The seal set screws differ from the usual due to the boss type.

FBN80B

FBN Finished Bore Sprocket New JIS Keyway Specification

Order Product Code

FBN80B12D32



! Sprockets with a ★ symbol for BD have a channel in the boss exterior.

No. of Teeth	S	GD
9	10.4	44

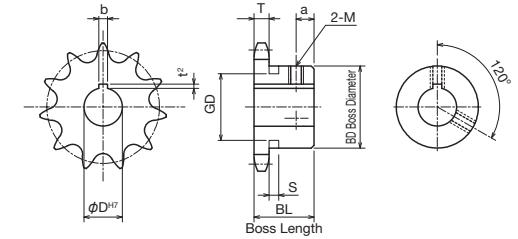
- Chain No.80
- Chain Pitch (P) 25.4 mm
- Roller Link Inner Width (W) 15.88 mm
- Roller Outside Diameter (Dr) 15.88 mm
- Tooth Width (T) 14.6 mm

TYPE	FBN80B										
	m Carbon Structural Steel h High-frequency Hardened Teeth										
Product Code	No. of Teeth	φ D ^{H7}	Keyway b×t ²	M	Do	Dp	BD	BL	a	Weight kg	
FBN80B9D25	9	25	8×3.3	8	85.0	74.265	★58	40	7	0.87	
FBN80B9D28	9	28	8×3.3	8	85.0	74.265	★58	40	7	0.87	
FBN80B9D30	9	30	8×3.3	8	85.0	74.265	★58	40	7	0.87	
FBN80B9D32	9	32	10×3.3	8	85.0	74.265	★58	40	7	0.87	
FBN80B9D35	9	35	10×3.3	8	85.0	74.265	★58	40	7	0.87	
FBN80B10D25	10	25	8×3.3	8	93.0	82.196	52	40	12	1.02	
FBN80B10D28	10	28	8×3.3	8	93.0	82.196	52	40	12	1.02	
FBN80B10D30	10	30	8×3.3	8	93.0	82.196	52	40	12	1.02	
FBN80B10D32	10	32	10×3.3	8	93.0	82.196	52	40	12	1.02	
FBN80B11D25	11	25	8×3.3	8	102.0	90.156	60	40	12	1.25	
FBN80B11D28	11	28	8×3.3	8	102.0	90.156	60	40	12	1.25	
FBN80B11D30	11	30	8×3.3	8	102.0	90.156	60	40	12	1.25	
FBN80B11D32	11	32	10×3.3	8	102.0	90.156	60	40	12	1.25	
FBN80B11D35	11	35	10×3.3	8	102.0	90.156	60	40	12	1.25	
FBN80B11D38	11	38	10×3.3	8	102.0	90.156	60	40	12	1.25	
FBN80B12D25	12	25	8×3.3	8	110.0	98.138	67	40	12	1.60	
FBN80B12D28	12	28	8×3.3	8	110.0	98.138	67	40	12	1.60	
FBN80B12D30	12	30	8×3.3	8	110.0	98.138	67	40	12	1.60	
FBN80B12D32	12	32	10×3.3	8	110.0	98.138	67	40	12	1.60	
FBN80B12D35	12	35	10×3.3	8	110.0	98.138	67	40	12	1.60	
FBN80B12D38	12	38	10×3.3	8	110.0	98.138	67	40	12	1.60	
FBN80B12D40	12	40	12×3.3	8	110.0	98.138	67	40	12	1.60	
FBN80B12D42	12	42	12×3.3	8	110.0	98.138	67	40	12	1.60	
FBN80B12D45	12	45	14×3.8	10	110.0	98.138	67	40	12	1.60	
FBN80B13D25	13	25	8×3.3	8	118.0	106.136	77	40	12	1.90	
FBN80B13D28	13	28	8×3.3	8	118.0	106.136	77	40	12	1.90	
FBN80B13D30	13	30	8×3.3	8	118.0	106.136	77	40	12	1.90	
FBN80B13D32	13	32	10×3.3	8	118.0	106.136	77	40	12	1.90	
FBN80B13D35	13	35	10×3.3	8	118.0	106.136	77	40	12	1.90	
FBN80B13D38	13	38	10×3.3	8	118.0	106.136	77	40	12	1.90	
FBN80B13D40	13	40	12×3.3	8	118.0	106.136	77	40	12	1.90	
FBN80B13D42	13	42	12×3.3	8	118.0	106.136	77	40	12	1.90	
FBN80B13D45	13	45	14×3.8	10	118.0	106.136	77	40	12	1.90	
FBN80B13D48	13	48	14×3.8	10	118.0	106.136	77	40	12	1.90	
FBN80B13D50	13	50	14×3.8	10	118.0	106.136	77	40	12	1.90	
FBN80B14D25	14	25	8×3.3	8	127.0	114.147	77	40	12	2.15	
FBN80B14D28	14	28	8×3.3	8	127.0	114.147	77	40	12	2.15	
FBN80B14D30	14	30	8×3.3	8	127.0	114.147	77	40	12	2.15	

*M is a set screw. ★ The seal set screws differ from the usual due to the boss type.



! φ D^{H7} □ mark setscrew is set at a location other than the keyway (figure at left).



TYPE	FBN80B										
	m Carbon Structural Steel h High-frequency Hardened Teeth										
Product Code	No. of Teeth	φ D ^{H7}	Keyway b×t ²	M	Do	Dp	BD	BL	a	Weight kg	
FBN80B14D32	14	32	10×3.3	8	127.0	114.147	77	40	12	2.15	
FBN80B14D35	14	35	10×3.3	8	127.0	114.147	77	40	12	2.15	
FBN80B14D38	14	38	10×3.3	8	127.0	114.147	77	40	12	2.15	
FBN80B14D40	14	40	12×3.3	8	127.0	114.147	77	40	12	2.15	
FBN80B14D42	14	42	12×3.3	8	127.0	114.147	77	40	12	2.15	
FBN80B14D45	14	45	14×3.8	10	127.0	114.147	77	40	12	2.15	
FBN80B14D48	14	48	14×3.8	10	127.0	114.147	77	40	12	2.15	
FBN80B14D50	14	50	14×3.8	10	127.0	114.147	77	40	12	2.15	
FBN80B15D25	15	25	8×3.3	8	135.0	122.167	93	40	12	2.30	
FBN80B15D28	15	28	8×3.3	8	135.0	122.167	93	40	12	2.30	
FBN80B15D30	15	30	8×3.3	8	135.0	122.167	93	40	12	2.30	
FBN80B15D32	15	32	10×3.3	8	135.0	122.167	93	40	12	2.30	
FBN80B15D35	15	35	10×3.3	8	135.0	122.167	93	40	12	2.30	
FBN80B15D38	15	38	10×3.3	8	135.0	122.167	93	40	12	2.30	
FBN80B15D40	15	40	12×3.3	8	135.0	122.167	93	40	12	2.30	
FBN80B15D42	15	42	12×3.3	8	135.0	122.167	93	40	12	2.30	
FBN80B15D45	15	45	14×3.8	10	135.0	122.167	93	40	12	2.30	
FBN80B15D48	15	48	14×3.8	10	135.0	122.167	93	40	12	2.30	
FBN80B15D50	15	50	14×3.8	10	135.0	122.167	93	40	12	2.30	
FBN80B15D55	15	55	16×4.3	12	135.0	122.167	93	40	12	2.30	
FBN80B15D60	15	60	18×4.4	12	135.0	122.167	93	40	12	2.30	
FBN80B16D24	16	24	8×3.3	8	143.0	130.196	93	40	12	2.50	
FBN80B16D25	16	25	8×3.3	8	143.0	130.196	93	40	12	2.50	
FBN80B16D28	16	28	8×3.3	8	143.0	130.196	93	40	12	2.50	
FBN80B16D30	16	30	8×3.3	8	143.0	130.196	93	40	12	2.50	
FBN80B16D32	16	32	10×3.3	8	143.0	130.196	93	40	12	2.50	
FBN80B16D35	16	35	10×3.3	8	143.0	130.196	93	40	12	2.50	
FBN80B16D38	16	38	10×3.3	8	143.0	130.196	93	40	12	2.50	
FBN80B16D40	16	40	12×3.3	8	143.0	130.196	93	40	12	2.50	
FBN80B16D42	16	42	12×3.3	8	143.0	130.196	93	40	12	2.50	
FBN80B16D45	16	45	14×3.8	10	143.0	130.196	93	40	12	2.50	
FBN80B16D48	16	48	14×3.8	10	143.0	130.196	93	40	12	2.50	
FBN80B16D50	16	50	14×3.8	10	143.0	130.196	93	40	12	2.50	
FBN80B16D55	16	55	16×4.3	12	143.0	130.196	93	40	12	2.50	
FBN80B16D60	16	60	18×4.4	12	143.0	130.196	93	40	12	2.50	
FBN80B17D25	17	25	8×3.3	8	151.0	138.232	93	40	12	2.95	
FBN80B17D28	17	28	8×3.3	8	151.0	138.232	93	40	12	2.95	
FBN80B17D30	17	30	8×3.3	8	151.0	138.232	93	40	12	2.95	

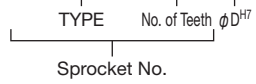
*M is a set screw. ★ The seal set screws differ from the usual due to the boss type.

FBN80B

FBN Finished Bore Sprocket New JIS Keyway Specification

Order Product Code

FBN80B12D32



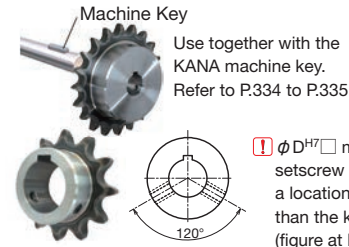
! Sprockets with a ★ symbol for BD have a channel in the boss exterior.

No. of Teeth	S	GD
9	10.4	44

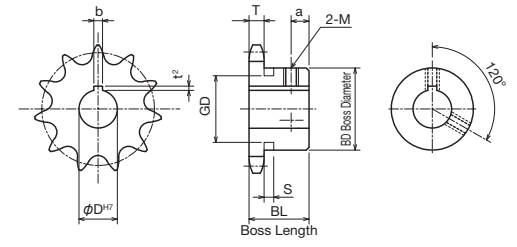
- Chain No.80
- Chain Pitch (P) 25.4 mm
- Roller Link Inner Width (W) 15.88 mm
- Roller Outside Diameter (Dr) 15.88 mm
- Tooth Width (T) 14.6 mm

TYPE	FBN80B										
Product Code	No. of Teeth	φ D ^{H7}	Keyway b×t ²	M	Do	Dp	BD	BL	a	Weight kg	
FBN80B17D32	17	32	10×3.3	8	151.0	138.232	93	40	12	2.95	
FBN80B17D35	17	35	10×3.3	8	151.0	138.232	93	40	12	2.95	
FBN80B17D38	17	38	10×3.3	8	151.0	138.232	93	40	12	2.95	
FBN80B17D40	17	40	12×3.3	8	151.0	138.232	93	40	12	2.95	
FBN80B17D42	17	42	12×3.3	8	151.0	138.232	93	40	12	2.95	
FBN80B17D45	17	45	14×3.8	10	151.0	138.232	93	40	12	2.95	
FBN80B17D48	17	48	14×3.8	10	151.0	138.232	93	40	12	2.95	
FBN80B17D50	17	50	14×3.8	10	151.0	138.232	93	40	12	2.95	
FBN80B17D55	17	55	16×4.3	12	151.0	138.232	93	40	12	2.95	
FBN80B17D60	17	60	18×4.4	12	151.0	138.232	93	40	12	2.95	
FBN80B18D25	18	25	8×3.3	8	159.0	146.273	93	40	12	3.15	
FBN80B18D28	18	28	8×3.3	8	159.0	146.273	93	40	12	3.15	
FBN80B18D30	18	30	8×3.3	8	159.0	146.273	93	40	12	3.15	
FBN80B18D32	18	32	10×3.3	8	159.0	146.273	93	40	12	3.15	
FBN80B18D35	18	35	10×3.3	8	159.0	146.273	93	40	12	3.15	
FBN80B18D38	18	38	10×3.3	8	159.0	146.273	93	40	12	3.15	
FBN80B18D40	18	40	12×3.3	8	159.0	146.273	93	40	12	3.15	
FBN80B18D42	18	42	12×3.3	8	159.0	146.273	93	40	12	3.15	
FBN80B18D45	18	45	14×3.8	10	159.0	146.273	93	40	12	3.15	
FBN80B18D48	18	48	14×3.8	10	159.0	146.273	93	40	12	3.15	
FBN80B18D50	18	50	14×3.8	10	159.0	146.273	93	40	12	3.15	
FBN80B18D55	18	55	16×4.3	12	159.0	146.273	93	40	12	3.15	
FBN80B18D60	18	60	18×4.4	12	159.0	146.273	93	40	12	3.15	
FBN80B19D25	19	25	8×3.3	8	167.0	154.319	93	40	12	3.40	
FBN80B19D28	19	28	8×3.3	8	167.0	154.319	93	40	12	3.40	
FBN80B19D30	19	30	8×3.3	8	167.0	154.319	93	40	12	3.40	
FBN80B19D32	19	32	10×3.3	8	167.0	154.319	93	40	12	3.40	
FBN80B19D35	19	35	10×3.3	8	167.0	154.319	93	40	12	3.40	
FBN80B19D38	19	38	10×3.3	8	167.0	154.319	93	40	12	3.40	
FBN80B19D40	19	40	12×3.3	8	167.0	154.319	93	40	12	3.40	
FBN80B19D42	19	42	12×3.3	8	167.0	154.319	93	40	12	3.40	
FBN80B19D45	19	45	14×3.8	10	167.0	154.319	93	40	12	3.40	
FBN80B19D48	19	48	14×3.8	10	167.0	154.319	93	40	12	3.40	
FBN80B19D50	19	50	14×3.8	10	167.0	154.319	93	40	12	3.40	
FBN80B19D55	19	55	16×4.3	12	167.0	154.319	93	40	12	3.40	
FBN80B19D60	19	60	18×4.4	12	167.0	154.319	93	40	12	3.40	
FBN80B20D25	20	25	8×3.3	8	176.0	162.368	93	40	12	3.60	
FBN80B20D28	20	28	8×3.3	8	176.0	162.368	93	40	12	3.60	

m Carbon Structural Steel
h High-frequency Hardened Teeth



! φ D^{H7} □ mark setscrew is set at a location other than the keyway (figure at left).



TYPE	FBN80B										
Product Code	No. of Teeth	φ D ^{H7}	Keyway b×t ²	M	Do	Dp	BD	BL	a	Weight kg	
FBN80B20D30	20	30	8×3.3	8	176.0	162.368	93	40	12	3.60	
FBN80B20D32	20	32	10×3.3	8	176.0	162.368	93	40	12	3.60	
FBN80B20D35	20	35	10×3.3	8	176.0	162.368	93	40	12	3.60	
FBN80B20D38	20	38	10×3.3	8	176.0	162.368	93	40	12	3.60	
FBN80B20D40	20	40	12×3.3	8	176.0	162.368	93	40	12	3.60	
FBN80B20D42	20	42	12×3.3	8	176.0	162.368	93	40	12	3.60	
FBN80B20D45	20	45	14×3.8	10	176.0	162.368	93	40	12	3.60	
FBN80B20D48	20	48	14×3.8	10	176.0	162.368	93	40	12	3.60	
FBN80B20D50	20	50	14×3.8	10	176.0	162.368	93	40	12	3.60	
FBN80B20D55	20	55	16×4.3	12	176.0	162.368	93	40	12	3.60	
FBN80B20D60	20	60	18×4.4	12	176.0	162.368	93	40	12	3.60	
FBN80B21D25	21	25	8×3.3	8	184.0	170.421	93	40	12	3.85	
FBN80B21D28	21	28	8×3.3	8	184.0	170.421	93	40	12	3.85	
FBN80B21D30	21	30	8×3.3	8	184.0	170.421	93	40	12	3.85	
FBN80B21D32	21	32	10×3.3	8	184.0	170.421	93	40	12	3.85	
FBN80B21D35	21	35	10×3.3	8	184.0	170.421	93	40	12	3.85	
FBN80B21D38	21	38	10×3.3	8	184.0	170.421	93	40	12	3.85	
FBN80B21D40	21	40	12×3.3	8	184.0	170.421	93	40	12	3.85	
FBN80B21D42	21	42	12×3.3	8	184.0	170.421	93	40	12	3.85	
FBN80B21D45	21	45	14×3.8	10	184.0	170.421	93	40	12	3.85	
FBN80B21D48	21	48	14×3.8	10	184.0	170.421	93	40	12	3.85	
FBN80B21D50	21	50	14×3.8	10	184.0	170.421	93	40	12	3.85	
FBN80B21D55	21	55	16×4.3	12	184.0	170.421	93	40	12	3.85	
FBN80B21D60	21	60	18×4.4	12	184.0	170.421	93	40	12	3.85	
FBN80B22D35	22	35	10×3.3	8	192.0	178.478	107	45	12	5.00	
FBN80B22D40	22	40	12×3.3	8	192.0	178.478	107	45	12	5.00	
FBN80B22D45	22	45	14×3.8	10	192.0	178.478	107	45	12	5.00	
FBN80B22D50	22	50	14×3.8	10	192.0	178.478	107	45	12	5.00	
FBN80B22D55	22	55	16×4.3	12	192.0	178.478	107	45	12	5.00	
FBN80B22D60	22	60	18×4.4	12	192.0	178.478	107	45	12	5.00	
FBN80B22D70	22	70	20×4.9	16	192.0	178.478	107	45	12	5.00	
FBN80B23D35	23	35	10×3.3	8	200.0	186.536	107	45	12	5.23	
FBN80B23D40	23	40	12×3.3	8	200.0	186.536	107	45	12	5.23	
FBN80B23D45	23	45	14×3.8	10	200.0	186.536	107	45	12	5.23	
FBN80B23D50	23	50	14×3.8	10	200.0	186.536	107	45	12	5.23	
FBN80B23D55	23	55	16×4.3	12	200.0	186.536	107	45	12	5.23	
FBN80B23D60	23	60	18×4.4	12	200.0	186.536	107	45	12	5.23	
FBN80B24D30	24	30	8×3.3	8	208.0	194.597	107	45	12	5.50	

m Carbon Structural Steel
h High-frequency Hardened Teeth

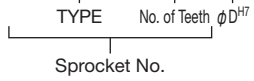
*M is a set screw. * The seal set screws differ from the usual due to the boss type.

*M is a set screw. * The seal set screws differ from the usual due to the boss type.

FBN80B

Order Product Code

FBN80B12D32



I Sprockets with a ★ symbol for BD have a channel in the boss exterior.

No. of Teeth	S	GD
9	10.4	44

- Chain **No.80**
- Chain Pitch **(P) 25.4 mm**
- Roller Link Inner Width **(W) 15.88 mm**
- Roller Outside Diameter **(Dr) 15.88 mm**
- Tooth Width **(T) 14.6 mm**

m Carbon Structural Steel
h High-frequency Hardened Teeth

TYPE	FBN80B									
Product Code	No. of Teeth	φ D ^{H7}	Keyway b×t ²	M	Do	Dp	BD	BL	a	Weight kg
FBN80B24D35	24	35	10×3.3	8	208.0	194.597	107	45	12	5.50
FBN80B24D40	24	40	12×3.3	8	208.0	194.597	107	45	12	5.50
FBN80B24D45	24	45	14×3.8	10	208.0	194.597	107	45	12	5.50
FBN80B24D50	24	50	14×3.8	10	208.0	194.597	107	45	12	5.50
FBN80B24D55	24	55	16×4.3	12	208.0	194.597	107	45	12	5.50
FBN80B24D60	24	60	18×4.4	12	208.0	194.597	107	45	12	5.50
FBN80B25D35	25	35	10×3.3	8	216.0	202.660	107	45	12	5.80
FBN80B25D40	25	40	12×3.3	8	216.0	202.660	107	45	12	5.80
FBN80B25D45	25	45	14×3.8	10	216.0	202.660	107	45	12	5.80
FBN80B25D50	25	50	14×3.8	10	216.0	202.660	107	45	12	5.80
FBN80B25D55	25	55	16×4.3	12	216.0	202.660	107	45	12	5.80
FBN80B25D60	25	60	18×4.4	12	216.0	202.660	107	45	12	5.80
FBN80B25D70	25	70	20×4.9	16	216.0	202.660	107	45	12	5.80
FBN80B26D35	26	35	10×3.3	8	224.0	210.724	107	45	12	6.10
FBN80B26D40	26	40	12×3.3	8	224.0	210.724	107	45	12	6.10
FBN80B26D45	26	45	14×3.8	10	224.0	210.724	107	45	12	6.10
FBN80B26D50	26	50	14×3.8	10	224.0	210.724	107	45	12	6.10
FBN80B26D55	26	55	16×4.3	12	224.0	210.724	107	45	12	6.10
FBN80B26D60	26	60	18×4.4	12	224.0	210.724	107	45	12	6.10
FBN80B27D50	27	50	14×3.8	10	233.0	218.790	107	45	12	6.40
FBN80B28D35	28	35	10×3.3	8	241.0	226.858	107	45	12	6.75
FBN80B28D40	28	40	12×3.3	8	241.0	226.858	107	45	12	6.75
FBN80B28D45	28	45	14×3.8	10	241.0	226.858	107	45	12	6.75
FBN80B28D50	28	50	14×3.8	10	241.0	226.858	107	45	12	6.75
FBN80B28D55	28	55	16×4.3	12	241.0	226.858	107	45	12	6.75
FBN80B28D60	28	60	18×4.4	12	241.0	226.858	107	45	12	6.75
FBN80B30D35	30	35	10×3.3	8	257.0	242.996	107	45	12	7.40
FBN80B30D40	30	40	12×3.3	8	257.0	242.996	107	45	12	7.40
FBN80B30D45	30	45	14×3.8	10	257.0	242.996	107	45	12	7.40
FBN80B30D50	30	50	14×3.8	10	257.0	242.996	107	45	12	7.40
FBN80B30D55	30	55	16×4.3	12	257.0	242.996	107	45	12	7.40
FBN80B30D60	30	60	18×4.4	12	257.0	242.996	107	45	12	7.40
FBN80B30D70	30	70	20×4.9	16	257.0	242.996	107	45	12	7.40
FBN80B32D40	32	40	12×3.3	8	273.0	259.138	107	45	12	8.15
FBN80B32D50	32	50	14×3.8	10	273.0	259.138	107	45	12	8.15
FBN80B36D60	36	60	18×4.4	12	306.0	291.432	117	50	12	10.60
FBN80B40D60	40	60	18×4.4	12	338.0	323.736	117	50	12	12.40

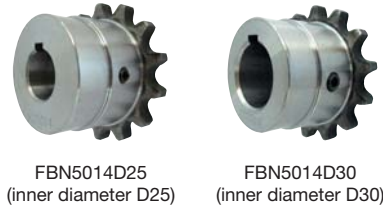
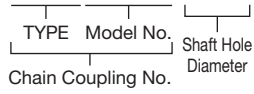
*M is a set screw. * The seal set screws differ from the usual due to the boss type.

FBN Chain Couplings

FBN Finished Bore Chain Coupling New/Old JIS Keyway Specification

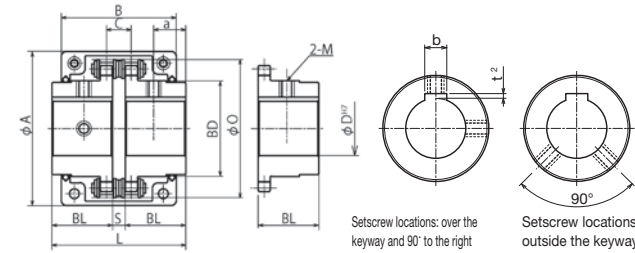
Order Product Code

FBN4012 D20 (for New JIS Key)



FBN5014D25 (inner diameter D25) FBN5014D30 (inner diameter D30)

* Only sold by one side.
Please purchase two if a set is required.



Setscrew locations: over the keyway and 90° to the right (diagram seen from the boss side)
Setscrew locations: outside the keyway and 90° right/left
(The square in the φD marks the setscrew position)

TYPE	FBN										
	Model Number	Keyway b×t ²	M	φ D ^{H7}	Body Dimensions						
				L	BL	S	BD	O	a	C	
FBN3012D14	5×2.3	5	14	64.8	29.8	5.2	26.5	45	16	10.2	0.1
FBN3012D16	5×2.3	5	16	64.8	29.8	5.2	26.5	45	16	10.2	0.1
FBN4012D14	5×2.3	6	14	79.4	36.0	7.4	36.0	62	17	14.4	0.2
FBN4012D15	5×2.3	6	15	79.4	36.0	7.4	36.0	62	17	14.4	0.2
FBN4012D16	5×2.3	6	16	79.4	36.0	7.4	36.0	62	17	14.4	0.2
FBN4012D17	5×2.3	6	17	79.4	36.0	7.4	36.0	62	17	14.4	0.2
FBN4012D18	6×2.8	6	18	79.4	36.0	7.4	36.0	62	17	14.4	0.2
FBN4012D19	6×2.8	6	19	79.4	36.0	7.4	36.0	62	17	14.4	0.2
FBN4012D20	6×2.8	6	20	79.4	36.0	7.4	36.0	62	17	14.4	0.2
FBN4012D22	6×2.8	6	22	79.4	36.0	7.4	36.0	62	17	14.4	0.2
FBN4014D17	5×2.3	6	17	79.4	36.0	7.4	45.0	69	17	14.4	0.3
FBN4014D18	6×2.8	6	18	79.4	36.0	7.4	45.0	69	17	14.4	0.3
FBN4014D19	6×2.8	6	19	79.4	36.0	7.4	45.0	69	17	14.4	0.3
FBN4014D20	6×2.8	6	20	79.4	36.0	7.4	45.0	69	17	14.4	0.3
FBN4014D22	6×2.8	6	22	79.4	36.0	7.4	45.0	69	17	14.4	0.3
FBN4014D24	8×3.3	8	24	79.4	36.0	7.4	45.0	69	17	14.4	0.3
FBN4014D25	8×3.3	8	25	79.4	36.0	7.4	45.0	69	17	14.4	0.3
FBN4014D28	8×3.3	8	28	79.4	36.0	7.4	45.0	69	17	14.4	0.3
FBN4014D30	8×3.3	8	30	79.4	36.0	7.4	45.0	69	17	14.4	0.3
FBN4016D19	6×2.8	6	19	87.4	40.0	7.4	51.0	77	23	14.4	0.5
FBN4016D20	6×2.8	6	20	87.4	40.0	7.4	51.0	77	23	14.4	0.5
FBN4016D22	6×2.8	6	22	87.4	40.0	7.4	51.0	77	23	14.4	0.5
FBN4016D24	8×3.3	8	24	87.4	40.0	7.4	51.0	77	23	14.4	0.5
FBN4016D25	8×3.3	8	25	87.4	40.0	7.4	51.0	77	23	14.4	0.5
FBN4016D28	8×3.3	8	28	87.4	40.0	7.4	51.0	77	23	14.4	0.5
FBN4016D30	8×3.3	8	30	87.4	40.0	7.4	51.0	77	23	14.4	0.5
FBN4016D32	10×3.3	8	32	87.4	40.0	7.4	51.0	77	23	14.4	0.5
FBN5014D20	6×2.8	6	20	99.7	45.0	9.7	56.0	86	24	18.1	0.7
FBN5014D22	6×2.8	6	22	99.7	45.0	9.7	56.0	86	24	18.1	0.7
FBN5014D24	8×3.3	8	24	99.7	45.0	9.7	56.0	86	24	18.1	0.7
FBN5014D25	8×3.3	8	25	99.7	45.0	9.7	56.0	86	24	18.1	0.7
FBN5014D28	8×3.3	8	28	99.7	45.0	9.7	56.0	86	24	18.1	0.7
FBN5014D30	8×3.3	8	30	99.7	45.0	9.7	56.0	86	24	18.1	0.7

m Carbon Structural Steel **h** High-frequency Hardened Teeth

TYPE	FBN										
	Model Number	Keyway b×t ²	M	φ D ^{H7}	Body Dimensions						
				L	BL	S	BD	O	a	C	
FBN5014D32	10×3.3	8	32	99.7	45.0	9.7	56.0	86	24	18.1	0.7
FBN5014D35	10×3.3	8	35	99.7	45.0	9.7	56.0	86	24	18.1	0.7
FBN5016D22	6×2.8	6	22	99.7	45.0	9.7	63.0	96	24	18.1	1.0
FBN5016D24	8×3.3	8	24	99.7	45.0	9.7	63.0	96	24	18.1	1.0
FBN5016D25	8×3.3	8	25	99.7	45.0	9.7	63.0	96	24	18.1	1.0
FBN5016D28	8×3.3	8	28	99.7	45.0	9.7	63.0	96	24	18.1	1.0
FBN5016D30	8×3.3	8	30	99.7	45.0	9.7	63.0	96	24	18.1	1.0
FBN5016D32	10×3.3	8	32	99.7	45.0	9.7	63.0	96	24	18.1	1.0
FBN5016D35	10×3.3	8	35	99.7	45.0	9.7	63.0	96	24	18.1	1.0
FBN5016D38	10×3.3	8	38	99.7	45.0	9.7	63.0	96	24	18.1	1.0
FBN5016D40	12×3.3	8	40	99.7	45.0	9.7	63.0	96	24	18.1	1.0
FBN5018D28	8×3.3	8	28	99.7	45.0	9.7	73.0	106	24	18.1	1.2
FBN5018D30	8×3.3	8	30	99.7	45.0	9.7	73.0	106	24	18.1	1.2
FBN5018D32	10×3.3	8	32	99.7	45.0	9.7	73.0	106	24	18.1	1.2
FBN5018D35	10×3.3	8	35	99.7	45.0	9.7	73.0	106	24	18.1	1.2
FBN5018D38	10×3.3	8	38	99.7	45.0	9.7	73.0	106	24	18.1	1.2
FBN5018D40	12×3.3	8	40	99.7	45.0	9.7	73.0	106	24	18.1	1.2
FBN5018D42	12×3.3	8	42	99.7	45.0	9.7	73.0	106	24	18.1	1.2
FBN5018D45	14×3.8	10	45	99.7	45.0	9.7	73.0	106	24	18.1	1.2
FBN6018D32	10×3.3	8	32	123.5	56.0	11.5	88.0	127	28	22.8	2.4
FBN6018D35	10×3.3	8	35	123.5	56.0	11.5	88.0	127	28	22.8	2.4
FBN6018D38	10×3.3	8	38	123.5	56.0	11.5	88.0	127	28	22.8	2.4
FBN6018D40	12×3.3	8	40	123.5	56.0	11.5	88.0	127	28	22.8	2.4
FBN6018D42	12×3.3	8	42	123.5	56.0	11.5	88.0	127	28	22.8	2.4
FBN6018D45	14×3.8	10	45	123.5	56.0	11.5	88.0	127	28	22.8	2.4
FBN6018D48	14×3.8	10	48	123.5	56.0	11.5	88.0	127	28	22.8	2.4
FBN6018D50	14×3.8	10	50	123.5	56.0	11.5	88.0	127	28	22.8	2.4
FBN6018D55	16×4.3	12	55	123.5	56.0	11.5	88.0	127	28	22.8	2.4

m Carbon Structural Steel **h** High-frequency Hardened Teeth

*M is a set screw. * The seal set screws differ from the usual due to the boss type.



* A dedicated chain and case are required for use.

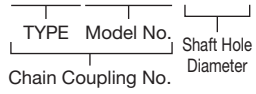
* Please refer to P.354 if you would like to order a set.

FBN Chain Couplings

FBN Finished Bore Chain Coupling New/Old JIS Keyway Specification

Order Product Code

FBN4012 D20 (for New JIS Key)

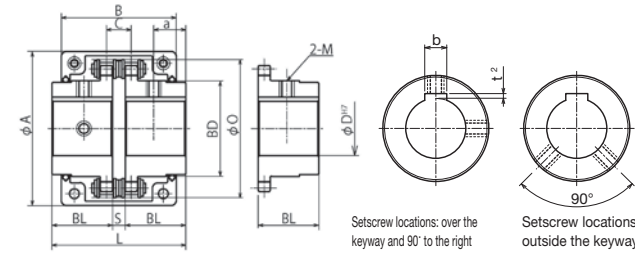


FBN5014D25
(inner diameter D25)



FBN5014D30
(inner diameter D30)

* Only sold by one side.
Please purchase two if a set is required.



Setscrew locations: over the keyway and 90° to the right (diagram seen from the boss side)

Setscrew locations: outside the keyway and 90° right/left

(The square in the ϕD marks the setscrew position)

TYPE	FBN										
	m Carbon Structural Steel h High-frequency Hardened Teeth										
Model Number	Keyway b×t ²	M	ϕD^{H7}	Body Dimensions							Weight kg
				L	BL	S	BD	O	a	C	
FBN6022D48	14×3.8	10	48	123.5	56.0	11.5	115.0	152	28	22.8	4.3
FBN6022D50	14×3.8	10	50	123.5	56.0	11.5	115.0	152	28	22.8	4.3
FBN6022D55	16×4.3	12	55	123.5	56.0	11.5	115.0	152	28	22.8	4.3
FBN6022D60	18×4.4	12	60	123.5	56.0	11.5	115.0	152	28	22.8	4.3
FBN6022D65	18×4.4	12	65	123.5	56.0	11.5	115.0	152	28	22.8	4.3
FBN8018D32	10×3.3	8	32	141.2	63.0	15.2	115.0	170	30	29.3	5.3
FBN8018D35	10×3.3	8	35	141.2	63.0	15.2	115.0	170	30	29.3	5.3
FBN8018D38	10×3.3	8	38	141.2	63.0	15.2	115.0	170	30	29.3	5.3
FBN8018D40	12×3.3	8	40	141.2	63.0	15.2	115.0	170	30	29.3	5.3
FBN8018D42	12×3.3	8	42	141.2	63.0	15.2	115.0	170	30	29.3	5.3
FBN8018D45	14×3.8	10	45	141.2	63.0	15.2	115.0	170	30	29.3	5.3
FBN8018D48	14×3.8	10	48	141.2	63.0	15.2	115.0	170	30	29.3	5.3
FBN8018D50	14×3.8	10	50	141.2	63.0	15.2	115.0	170	30	29.3	5.3
FBN8018D55	16×4.3	12	55	141.2	63.0	15.2	115.0	170	30	29.3	5.3
FBN8018D60	18×4.4	12	60	141.2	63.0	15.2	115.0	170	30	29.3	5.3
FBN8018D65	18×4.4	12	65	141.2	63.0	15.2	115.0	170	30	29.3	5.3
FBN8018D70	20×4.9	16	70	141.2	63.0	15.2	115.0	170	30	29.3	5.3
FBN8018D75	20×4.9	16	75	141.2	63.0	15.2	115.0	170	30	29.3	5.3

*M is a set screw. * The seal set screws differ from the usual due to the boss type.

TYPE	FBN										
	m Carbon Structural Steel h High-frequency Hardened Teeth										
Model Number	Keyway b×t ²	M	ϕD^{H7}	Body Dimensions							Weight kg
				L	BL	S	BD	O	a	C	
FBN8022D40	12×3.3	8	40	157.2	71.0	15.2	143.0	202	30	29.3	9.1
FBN8022D42	12×3.3	8	42	157.2	71.0	15.2	143.0	202	30	29.3	9.1
FBN8022D45	14×3.8	10	45	157.2	71.0	15.2	143.0	202	30	29.3	9.1
FBN8022D48	14×3.8	10	48	157.2	71.0	15.2	143.0	202	30	29.3	9.1
FBN8022D50	14×3.8	10	50	157.2	71.0	15.2	143.0	202	30	29.3	9.1
FBN8022D55	16×4.3	12	55	157.2	71.0	15.2	143.0	202	30	29.3	9.1
FBN8022D60	18×4.4	12	60	157.2	71.0	15.2	143.0	202	30	29.3	9.1
FBN8022D65	18×4.4	12	65	157.2	71.0	15.2	143.0	202	30	29.3	9.1
FBN8022D70	20×4.9	16	70	157.2	71.0	15.2	143.0	202	30	29.3	9.1
FBN8022D75	20×4.9	16	75	157.2	71.0	15.2	143.0	202	30	29.3	9.1
FBN8022D80	22×5.4	16	80	157.2	71.0	15.2	143.0	202	30	29.3	9.1

*M is a set screw. * The seal set screws differ from the usual due to the boss type.



* A dedicated chain and case are required for use.

* Please refer to P.354 if you would like to order a set.